

## Recombinant Human IL2RG protein, His-Avi-tagged

Cat. No. IL2RG-785H Lot. No. (See product label)

### SPECIFICATION

|                         |  |
|-------------------------|--|
| <b>Product Overview</b> | Recombinant Human CD132 Protein is expressed from mammalian with His Tag and Avi Tag at the C-terminal. It contains Leu 23-Asn 254.  |
| <b>Species</b>          | Human  |
| <b>Source</b>           | HEK293   |
| <b>ProteinLength</b>    | Leu 23-Asn 254   |
| <b>Description</b>      | The gamma chain of the high affinity functional human IL-2 receptor complex belongs to the hematopoietin receptor family. IL-2 R gamma is a 369 amino acid residue protein consisting of a 22 residue signal sequence, a 232 residue extracellular domain, a 29 residue transmembrane domain and an 86 residue cytoplasmic domain. Although IL-2 R gamma by itself does not bind IL-2 with any appreciable affinity, it is required for IL-2 receptor signaling. |
| <b>Form</b>             | Supplied as 0.22um filtered solution in PBS (pH 7.4).  |
| <b>Molecular Mass</b>   | The protein has a predicted MW of 39.9 KDa. Due to glycosylation, the protein migrates to 58- 70KDa based on Bis-Tris PAGE result.   |
| <b>Endotoxin</b>        | Less than 0.2 EU per ug by the LAL method.   |
| <b>Purity</b>           | > 95% as determined by Bis-Tris PAGE; > 95% as determined by HPLC  |

 Tel: 1-631-559-9269 1-516-512-3133

 Email: [info@creative-biomart.com](mailto:info@creative-biomart.com)  Fax: 1-631-938-8127

 45-1 Ramsey Road, Shirley, NY 11967, USA

**Storage** The product should be stored at -70°C. Please do not repeated freeze-thaw cycles.

## GENE INFORMATION

**Gene Name** IL2RG interleukin 2 receptor subunit gamma [ Homo sapiens (human) ]

**Official Symbol** IL2RG

**Synonyms**

CD132 antigen; CD132; CIDX; combined immunodeficiency, X-linked; common cytokine receptor gamma chain; Common gamma Chain; common gamma-chain; cytokine receptor common subunit gamma; gamma(c); IL-2 R gamma; IL-2 receptor subunit gamma; IL2R gamma; IL-2R subunit gamma; IL2RG; IL-2RG; IMD4; interleukin 2 receptor, gamma; Interleukin-2 receptor subunit gamma; P64; SCIDX; SCIDX1; severe combined immunodeficiency.

**Gene ID** 3561

**mRNA Refseq** NM\_000206.3

**Protein Refseq** NP\_000197.1

**MIM** 308380

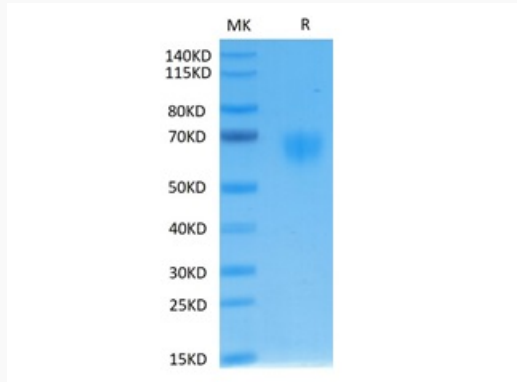
**UniProt ID** P31785

 Tel: 1-631-559-9269 1-516-512-3133

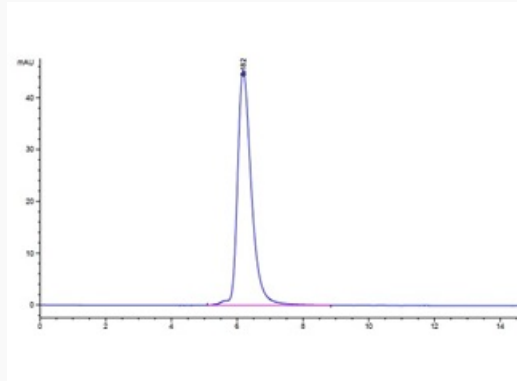
 Email: [info@creative-biomart.com](mailto:info@creative-biomart.com)  Fax: 1-631-938-8127


 45-1 Ramsey Road, Shirley, NY 11967, USA

**Tris-Bis PAGE of  
IL2RG-785H**




**SEC-HPLC of IL2RG-  
785H**



 Tel: 1-631-559-9269 1-516-512-3133

 Email: [info@creative-biomart.com](mailto:info@creative-biomart.com)  Fax: 1-631-938-8127

 45-1 Ramsey Road, Shirley, NY 11967, USA