

Recombinant Human IL3 protein, His-Avi-tagged

Cat. No. IL3-131H Lot. No. (See product label)

SPECIFICATION

Product Overview	Human IL-3 Protein is expressed from mammalian with a His tag and Avi tag at the N-terminal. It contains Ala20-Phe152.
Species	Human
Source	HEK293
ProteinLength	It contains Ala20-Phe152.
Description	Interleukin 3 is a pleiotropic factor produced primarily by activated T cells that can stimulate the proliferation and differentiation of pluripotent hematopoietic stem cells as well as various lineage committed progenitors. This CSF induces granulocytes, macrophages, mast cells, stem cells, erythroid cells, eosinophils and megakaryocytes.
Form	Supplied as 0.22um filtered solution in PBS (pH 7.4).
Molecular Mass	The protein has a predicted MW of 16.9 kDa. Due to glycosylation, the protein migrates to 18-20 kDa based on Bis-Tris PAGE result.
Endotoxin	Less than 0.5EU per ug by the LAL method.
Purity	> 95% as determined by Tris-Bis PAGE; > 95% as determined by HPLC
Storage	The product should be stored at -70°C. Please do not repeated freeze-thaw cycles.

 Tel: 1-631-559-9269 1-516-512-3133

 Email: info@creative-biomart.com  Fax: 1-631-938-8127

 45-1 Ramsey Road, Shirley, NY 11967, USA

Reconstitution It is recommended that sterile water be added to the vial to prepare a stock solution of 0.2 ug/ul. Centrifuge the vial at 4°C before opening to recover the entire contents.

GENE INFORMATION

Gene Name IL3 interleukin 3 (colony-stimulating factor, multiple) [Homo sapiens]

Official Symbol IL3

Synonyms Hematopoietic growth factor; IL3; IL-3; IL-3MGC79398; interleukin 3 (colony-stimulating factor, multiple); interleukin-3; Mast cell growth factor; mast-cell growth factor; MCGFMGC79399; MULTI-CSF; multilineage-colony-stimulating factor; Multipotential colony-stimulating factor; P-cell stimulating factor; P-cell-stimulating factor

Gene ID 3562

mRNA Refseq NM_000588

Protein Refseq NP_000579

MIM 147740

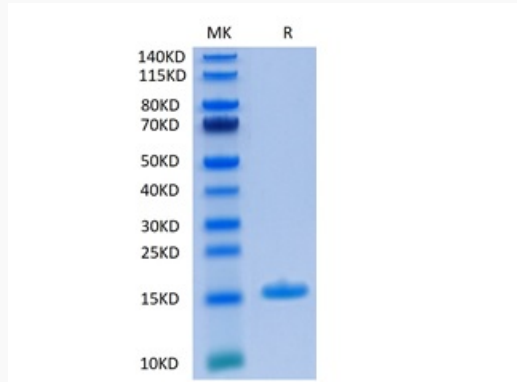
UniProt ID P08700

 Tel: 1-631-559-9269 1-516-512-3133

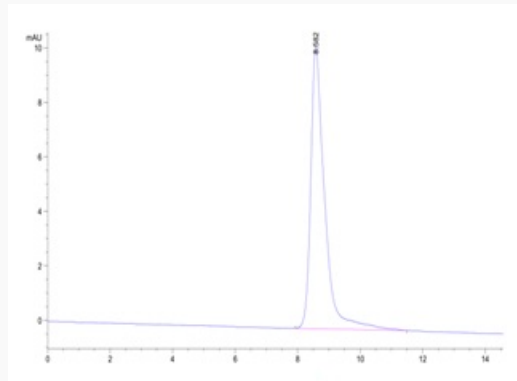
 Email: info@creative-biomart.com  Fax: 1-631-938-8127

 45-1 Ramsey Road, Shirley, NY 11967, USA

Tris-Bis PAGE



HPLC data



 Tel: 1-631-559-9269 1-516-512-3133

 Email: info@creative-biomart.com  Fax: 1-631-938-8127

 45-1 Ramsey Road, Shirley, NY 11967, USA