

Recombinant Human IL3 protein, His-Avi-tagged

Cat. No. IL3-7433H Lot. No. (See product label)

SPECIFICATION

Product Overview	Recombinant Human IL3 protein(P08700)(Ala20-Phe152), fused with N-terminal His and Avi tag, was expressed in E.coli.
Species	Human
Source	E.coli
ProteinLength	Ala20-Phe152
Tag	N-His-Avi
Form	Lyophilized from 0.22µm filtered solution in PBS (pH 7.4). Normally 5% trehalose is added as protectant before lyophilization.
Bio-activity	Immobilized Human IL-3, His Tag at 5µg/ml (100µl/well) on the plate. Dose response curve for Human IL-3 R alpha, hFc Tag with the EC50 of 0.46µg/ml determined by ELISA.
Molecular Mass	The protein has a predicted MW of 16.9 kDa same as Tris-Bis PAGE result.
Endotoxin	Less than 1EU per µg by the LAL method.
Purity	> 95% as determined by Tris-Bis PAGE; > 95% as determined by HPLC
Storage	Reconstituted protein stable at -80°C for 12 months, 4°C for 1 week. Use a manual

 Tel: 1-631-559-9269 1-516-512-3133

 Email: info@creative-biomart.com  Fax: 1-631-938-8127

 45-1 Ramsey Road, Shirley, NY 11967, USA

defrost freezer and avoid repeated freeze-thaw cycles.

Reconstitution

Centrifuge tubes before opening. Reconstituting to a concentration more than 100 µg/ml is recommended. Dissolve the lyophilized protein in distilled water.

GENE INFORMATION

Gene Name

[IL3 interleukin 3 \(colony-stimulating factor, multiple\) \[Homo sapiens \]](#)

Official Symbol

[IL3](#)

Synonyms

IL3; interleukin 3 (colony-stimulating factor, multiple); interleukin-3; hematopoietic growth factor; IL 3; mast cell growth factor; MCGF; MGC79398; MGC79399; MULTI CSF; multilineage colony stimulating factor; P cell stimulating factor; mast-cell growth factor; P-cell stimulating factor; P-cell-stimulating factor; multilineage-colony-stimulating factor; multipotential colony-stimulating factor; IL-3; MULTI-CSF;

Gene ID

[3562](#)

mRNA Refseq

[NM_000588](#)

Protein Refseq

[NP_000579](#)

MIM

[147740](#)

UniProt ID

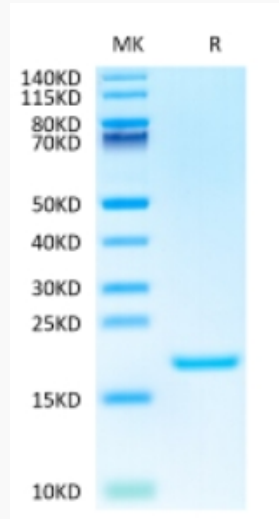
[P08700](#)

 Tel: 1-631-559-9269 1-516-512-3133

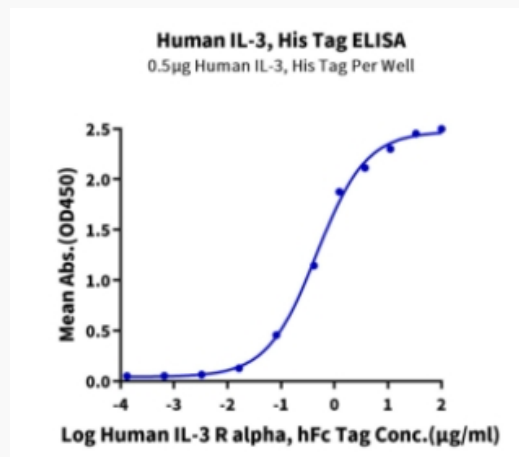
 Email: info@creative-biomart.com  Fax: 1-631-938-8127

 45-1 Ramsey Road, Shirley, NY 11967, USA

Tris-Bis PAGE



ELISA Data



 Tel: 1-631-559-9269 1-516-512-3133

 Email: info@creative-biomart.com  Fax: 1-631-938-8127

 45-1 Ramsey Road, Shirley, NY 11967, USA