

Recombinant Human IL31 protein, His-tagged

Cat. No. IL31-0224H Lot. No. (See product label)

SPECIFICATION

Product Overview	Recombinant Human IL31 protein(Q6EBC2-1)(Ser24-Thr164), fused with N-terminal His tag, was expressed in HEK293.
Species	Human
Source	HEK293
ProteinLength	Ser24-Thr164
Tag	N-His
Form	Lyophilized from 0.22µm filtered solution in PBS (pH 7.4). Normally 5% trehalose is added as protectant before lyophilization.
Bio-activity	Immobilized Human IL-31, His Tag at 5ug/ml (100ul/Well) on the plate. Dose response curve for Human IL-31 RA, hFc Tag with the EC50 of 1.53ug/ml determined by ELISA (QC Test).
Molecular Mass	The protein has a predicted MW of 16.9 kDa. Due to glycosylation, the protein migrates to 20-25 kDa based on Tris-Bis PAGE result.
Endotoxin	Less than 1EU per µg by the LAL method.
Purity	> 95% as determined by Tris-Bis PAGE;> 95% as determined by HPLC

 Tel: 1-631-559-9269 1-516-512-3133

 Email: info@creative-biomart.com  Fax: 1-631-938-8127

 45-1 Ramsey Road, Shirley, NY 11967, USA

Storage Reconstituted protein stable at -80°C for 12 months, 4°C for 1 week. Use a manual defrost freezer and avoid repeated freeze-thaw cycles.

Reconstitution Centrifuge tubes before opening. Reconstituting to a concentration more than 100 µg/ml is recommended. Dissolve the lyophilized protein in distilled water.

GENE INFORMATION

Gene Name IL31 interleukin 31 [Homo sapiens]

Official Symbol IL31

Synonyms IL31; interleukin 31; interleukin-31; IL 31; IL-31;

Gene ID 386653

mRNA Refseq NM_001014336

Protein Refseq NP_001014358

MIM 609509

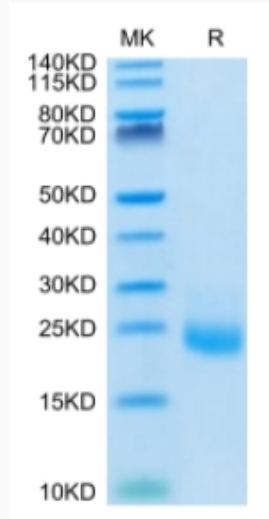
UniProt ID Q6EBC2

 Tel: 1-631-559-9269 1-516-512-3133

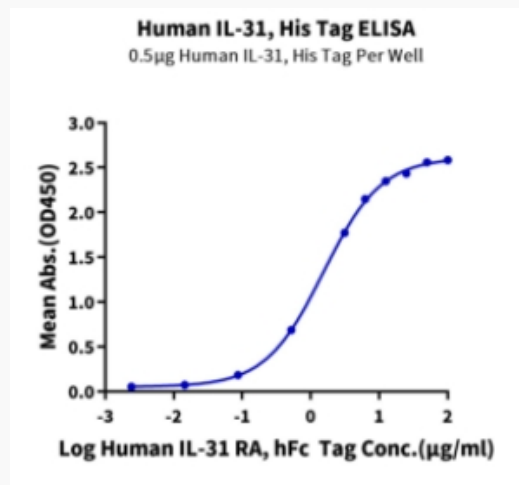
 Email: info@creative-biomart.com  Fax: 1-631-938-8127

 45-1 Ramsey Road, Shirley, NY 11967, USA

Tris-Bis PAGE



ELISA Data



 Tel: 1-631-559-9269 1-516-512-3133

 Email: info@creative-biomart.com  Fax: 1-631-938-8127

 45-1 Ramsey Road, Shirley, NY 11967, USA