

Recombinant Dog IL31 Protein (24-159aa)

Cat. No. IL31-05D Lot. No. (See product label)

SPECIFICATION

Product Overview	Recombinant Canine IL31 without tag was expressed in HEK293 cell and purified by using conventional chromatography techniques.
Species	Dog
Source	HEK293
ProteinLength	24-159aa
Description	IL31, also known as interleukin-31, is a cytokine with an anti-parallel four-helix bundle structure in the gp130/IL-6 cytokine family. It shares several structural and functional characteristics with IL-6, Oncostatin M, LIF, and Cardiotrophin-1. This protein is mainly associated with activated T cells and is preferentially expressed by type 2 helper T cells (Th2). This protein is an inflammatory cytokine that helps trigger cell-mediated immunity against pathogens. It has also been identified as a major player in a number of chronic inflammatory diseases, including atopic dermatitis.
Form	Liquid
Molecular Mass	15.3 kDa (136aa)
AA Sequence	SHMAPTHQLPPSDVRKIILELQPLSRGLLEDYQKKETGVPEsnRtLLlCLtSDsQPPR LNSSAILPYFRAIRPLSDKNIIDKIIeQLDKLKFQHEPETeISVPADTFECKSFILtILQQF SACLESVFKSLNSGPQ

 Tel: 1-631-559-9269 1-516-512-3133

 Email: info@creative-biomart.com  Fax: 1-631-938-8127

 45-1 Ramsey Road, Shirley, NY 11967, USA

Endotoxin	< 1 EU/μg of protein (determined by LAL method)
Purity	> 90% by SDS-PAGE
Applications	SDS-PAGE
Notes	Note: For research use only. This product is not intended or approved for human, diagnostics or veterinary use.
Storage	Can be stored at +2 to +8 centigrade for 1 week. For long term storage, aliquot and store at -20 to -80 centigrade. Avoid repeated freezing and thawing cycles.
Concentration	1 mg/mL (determined by Bradford assay)
Storage Buffer	Phosphate-Buffered Saline (pH 7.4) containing 10% glycerol

GENE INFORMATION

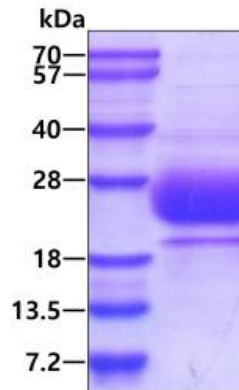
Gene Name	IL31 interleukin 31 [<i>Canis lupus familiaris</i> (dog)]
Official Symbol	IL31
Synonyms	IL31; interleukin 31; interleukin-31
Gene ID	100302725
mRNA Refseq	NM_001165914
Protein Refseq	NP_001159386
UniProt ID	C7G0W1

 Tel: 1-631-559-9269 1-516-512-3133

 Email: info@creative-biomart.com  Fax: 1-631-938-8127

 45-1 Ramsey Road, Shirley, NY 11967, USA

SDS-PAGE



3 μ g by SDS-PAGE under reducing condition and visualized by coomassie blue stain

 Tel: 1-631-559-9269 1-516-512-3133

 Email: info@creative-biomart.com  Fax: 1-631-938-8127

 45-1 Ramsey Road, Shirley, NY 11967, USA