

Recombinant Active Human IL31 Protein, His-tagged(C-ter)

Cat. No. IL31-189H Lot. No. (See product label)

SPECIFICATION

Product Overview	Recombinant Active Human IL31 Protein with His tag (C-ter) was expressed in E. coli.
Species	Human
Source	E.coli
Description	IL31, which is made principally by activated Th2-type T cells, interacts with a heterodimeric receptor consisting of IL31RA (MIM 609510) and OSMR (MIM 601743) that is constitutively expressed on epithelial cells and keratinocytes. IL31 may be involved in the promotion of allergic skin disorders and in regulating other allergic diseases, such as asthma (Dillon et al., 2004 [PubMed 15184896]).[supplied by OMIM, Mar 2008]
Form	Powder
Bio-activity	Measured by its ability to induce STAT3 activation in U-87 cells. The ED50 for this effect is < 20 ng/mL.
AA Sequence	MSHTLPVRLRRPSDDVQKIVEELQSLSKMLLKDVVEEEKGVLVSQNYTLPCLSPDAQP PNNIHSPAIRAYLKTIRQLDNKSVIDEIIEHLDKLIFQDAPETNISVPTDTHECKRFILTIS QQFSECMDLALKSLTSGAQQATT
Endotoxin	Endotoxin level is less than 0.1 EU/μg of the protein, as determined by the LAL test.
Purity	> 98% (by SDS-PAGE)

 Tel: 1-631-559-9269 1-516-512-3133

 Email: info@creative-biomart.com  Fax: 1-631-938-8127

 45-1 Ramsey Road, Shirley, NY 11967, USA

Applications	SDS-PAGE
Notes	For laboratory research only, not for drug, diagnostic or other use.
Storage	Lyophilized protein should be stored at -20°C. After reconstitution, aliquot and store at -20°C or -80°C for up to one month. Storage in frost free freezers is not recommended. Avoid repeated freeze/thaw cycles. Suggest spin the vial prior to opening.
Storage Buffer	PBS (pH 8.0)
Reconstitution	It is recommended to reconstitute the lyophilized protein in sterile water to a concentration not less than 100 µg/mL and incubate the stock solution for at least 20 min at room temperature to make sure the protein is dissolved completely.

GENE INFORMATION

Gene Name	IL31 interleukin 31 [Homo sapiens]
Official Symbol	IL31
Synonyms	IL31; interleukin 31; interleukin-31; IL 31; IL-31;
Gene ID	386653
mRNA Refseq	NM_001014336
Protein Refseq	NP_001014358
MIM	609509

 Tel: 1-631-559-9269 1-516-512-3133

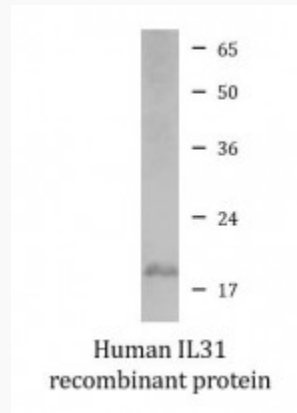
 Email: info@creative-biomart.com  Fax: 1-631-938-8127

 45-1 Ramsey Road, Shirley, NY 11967, USA

UniProt ID

Q6EBC2

SDS-PAGE



 Tel: 1-631-559-9269 1-516-512-3133

 Email: info@creative-biomart.com  Fax: 1-631-938-8127

 45-1 Ramsey Road, Shirley, NY 11967, USA