

Recombinant Human IL31RA protein, His-tagged

Cat. No. IL31RA-1012H Lot. No. (See product label)

SPECIFICATION

Product Overview	Recombinant Human IL31RA protein(Q8NI17-1)(Ala20-Glu519), fused with C-terminal His tag, was expressed in HEK293.
Species	Human
Source	HEK293
ProteinLength	Ala20-Glu519
Tag	C-His
Form	Lyophilized from 0.22µm filtered solution in PBS (pH 7.4). Normally 8% trehalose is added as protectant before lyophilization.
Bio-activity	Immobilized Human IL-31 RA, His Tag at 1 µg/ml (100 µl/well) on the plate. Dose response curve for Anti-IL-31 RA Antibody, hFc Tag with the EC50 of 4.7 ng/ml determined by ELISA (QC Test).
Molecular Mass	The protein has a predicted MW of 58.2 kDa. Due to glycosylation, the protein migrates to 90-116 kDa based on Tris-Bis PAGE result.
Endotoxin	Less than 1EU per µg by the LAL method.
Purity	> 95% as determined by Tris-Bis PAGE;> 95% as determined by HPLC

 Tel: 1-631-559-9269 1-516-512-3133

 Email: info@creative-biomart.com  Fax: 1-631-938-8127

 45-1 Ramsey Road, Shirley, NY 11967, USA

Storage Reconstituted protein stable at -80°C for 12 months, 4°C for 1 week. Use a manual defrost freezer and avoid repeated freeze-thaw cycles.

Reconstitution Centrifuge tubes before opening. Reconstituting to a concentration more than 100 µg/ml is recommended. Dissolve the lyophilized protein in distilled water.

GENE INFORMATION

Gene Name [IL31RA interleukin 31 receptor A \[Homo sapiens \]](#)

Official Symbol [IL31RA](#)

Synonyms IL31RA; interleukin 31 receptor A; interleukin-31 receptor subunit alpha; CRL; CRL3; GLM R; Glmr; IL 31RA; zcytoR17; IL-31R subunit alpha; cytokine receptor-like 3; class I cytokine receptor; IL-31 receptor subunit alpha; gp130-like monocyte receptor; soluble type I cytokine receptor CRL3; GPL; GLMR; GLM-R; PLCA2; hGLM-R; IL-31RA; PRO21384; MGC125346;

Gene ID [133396](#)

mRNA Refseq [NM_001242636](#)

Protein Refseq [NP_001229565](#)

MIM [609510](#)

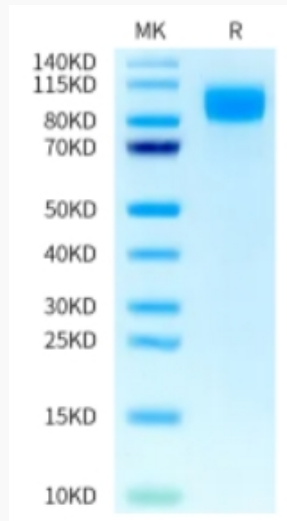
UniProt ID [Q8NI17](#)

 Tel: 1-631-559-9269 1-516-512-3133

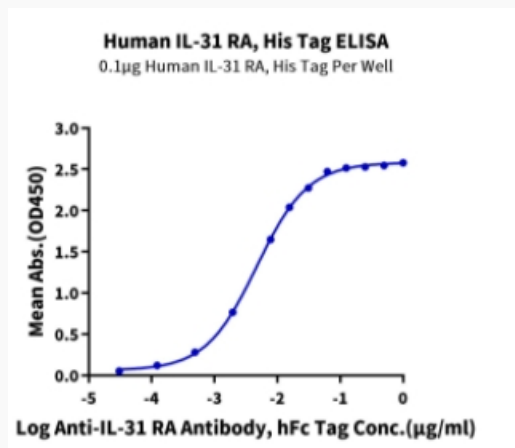
 Email: info@creative-biomart.com  Fax: 1-631-938-8127

 45-1 Ramsey Road, Shirley, NY 11967, USA

Tris-Bis PAGE



ELISA Data



 Tel: 1-631-559-9269 1-516-512-3133

 Email: info@creative-biomart.com  Fax: 1-631-938-8127

 45-1 Ramsey Road, Shirley, NY 11967, USA