

Recombinant Human IL31RA Protein, His-tagged

Cat. No. IL31RA-2312H Lot. No. (See product label)

SPECIFICATION

Product Overview	Recombinant Human IL31RA Protein (Ala20-Glu519) with a N-His tag was expressed in E. coli.
Species	Human
Source	E.coli
ProteinLength	Ala20-Glu519
Description	The protein encoded by this gene belongs to the type I cytokine receptor family. This receptor, with homology to gp130, is expressed on monocytes, and is involved in IL-31 signaling via activation of STAT-3 and STAT-5. It functions either as a monomer, or as part of a receptor complex with oncostatin M receptor (OSMR). Several alternatively spliced transcript variants encoding different isoforms have been noted for this gene.
Form	Freeze-dried powder
Molecular Mass	Predicted Molecular Mass: 60.7 kDa Accurate Molecular Mass: 63 kDa
Endotoxin	<1.0 EU per 1g (determined by the LAL method).
Purity	> 90%

 Tel: 1-631-559-9269 1-516-512-3133

 Email: info@creative-biomart.com  Fax: 1-631-938-8127

 45-1 Ramsey Road, Shirley, NY 11967, USA

Applications	Positive Control; Immunogen; SDS-PAGE; WB.
Stability	The thermal stability is described by the loss rate. The loss rate was determined by accelerated thermal degradation test, that is, incubate the protein at 37 centigrade for 48h, and no obvious degradation and precipitation were observed. The loss rate is less than 5% within the expiration date under appropriate storage condition.
Storage	Avoid repeated freeze/thaw cycles. Store at 2-8 centigrade for one month. Aliquot and store at -80 centigrade for 12 months.
Storage Buffer	20mM Tris, 150mM NaCl, pH8.0, containing 1mM EDTA, 1mM DTT, 0.01% SKL, 5% Trehalose and Proclin300.
Reconstitution	Reconstitute in 20mM Tris, 150mM NaCl (pH8.0) to a concentration of 0.1-1.0 mg/mL. Do not vortex.

GENE INFORMATION

Gene Name	IL31RA interleukin 31 receptor A [Homo sapiens (human)]
Official Symbol	IL31RA
Synonyms	IL31RA; interleukin 31 receptor A; interleukin-31 receptor subunit alpha; CRL; CRL3; GLM R; Glmr; IL 31RA; zcytoR17; IL-31R subunit alpha; cytokine receptor-like 3; class I cytokine receptor; IL-31 receptor subunit alpha; gp130-like monocyte receptor; soluble type I cytokine receptor CRL3; GPL; GLMR; GLM-R; PLCA2; hGLM-R; IL-31RA; PRO21384; MGC125346;
Gene ID	133396
mRNA Refseq	NM_001242636

 Tel: 1-631-559-9269 1-516-512-3133

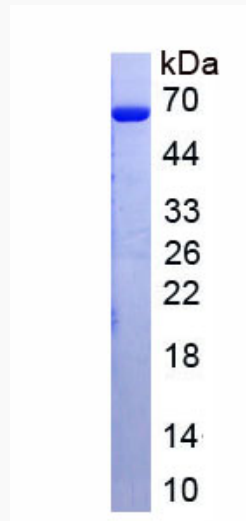
 Email: info@creative-biomart.com  Fax: 1-631-938-8127

 45-1 Ramsey Road, Shirley, NY 11967, USA

Protein Refseq NP_001229565

MIM 609510

UniProt ID Q8NI17



 Tel: 1-631-559-9269 1-516-512-3133

 Email: info@creative-biomart.com  Fax: 1-631-938-8127

 45-1 Ramsey Road, Shirley, NY 11967, USA