

Recombinant Human IL31RA protein, hFc-tagged

Cat. No. IL31RA-731H Lot. No. (See product label)

SPECIFICATION

Product Overview	Recombinant Human IL31RA protein(Q8NI17-1)(Ala 20 - Glu 519), fused with C-terminal hFc tag, was expressed in HEK293.
Species	Human
Source	HEK293
ProteinLength	Ala 20 - Glu 519
Form	Lyophilized from 0.22 µm filtered solution in Tris with Glycine, Arginine and NaCl, pH7.5 with trehalose as protectant.
Bio-activity	Immobilized Human IL-31, His Tag at 1 µg/mL (100 µL/well) can bind Human IL-31 RA, Fc Tag with a linear range of 0.01-0.313 µg/mL.
Molecular Mass	The protein has a calculated MW of 83.5 kDa. The protein migrates as 105-115 kDa under reducing (R) condition (SDS-PAGE) due to glycosylation.
Endotoxin	Less than 1.0 EU per µg by the LAL method.
Purity	>95% as determined by SDS-PAGE.
Storage	For long term storage, the product should be stored at lyophilized state at -20°C or lower. Please avoid repeated freeze-thaw cycles.

 Tel: 1-631-559-9269 1-516-512-3133

 Email: info@creative-biomart.com  Fax: 1-631-938-8127

 45-1 Ramsey Road, Shirley, NY 11967, USA

This product is stable after storage at:
 -20°C to -70°C for 12 months in lyophilized state;
 -70°C for 3 months under sterile conditions after reconstitution.

Reconstitution

It is recommended that sterile water be added to the vial to prepare a stock solution of 0.2 ug/ul. Centrifuge the vial at 4°C before opening to recover the entire contents.

GENE INFORMATION

Gene Name [IL31RA interleukin 31 receptor A \[Homo sapiens \]](#)

Official Symbol [IL31RA](#)

Synonyms IL31RA; interleukin 31 receptor A; interleukin-31 receptor subunit alpha; CRL; CRL3; GLM R; Glmr; IL 31RA; zcytoR17; IL-31R subunit alpha; cytokine receptor-like 3; class I cytokine receptor; IL-31 receptor subunit alpha; gp130-like monocyte receptor; soluble type I cytokine receptor CRL3; GPL; GLMR; GLM-R; PLCA2; hGLM-R; IL-31RA; PRO21384; MGC125346;

Gene ID [133396](#)

mRNA Refseq [NM_001242636](#)

Protein Refseq [NP_001229565](#)

MIM [609510](#)

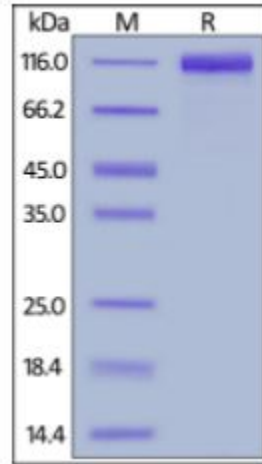
UniProt ID [Q8NI17](#)

 Tel: 1-631-559-9269 1-516-512-3133

 Email: info@creative-biomart.com  Fax: 1-631-938-8127

 45-1 Ramsey Road, Shirley, NY 11967, USA

SDS-PAGE



 Tel: 1-631-559-9269 1-516-512-3133

 Email: info@creative-biomart.com  Fax: 1-631-938-8127

 45-1 Ramsey Road, Shirley, NY 11967, USA