

Recombinant Human IL32 protein, His-tagged

Cat. No. IL32-156H Lot. No. (See product label)

SPECIFICATION

Product Overview	Recombinant Human IL32 protein(NP_001012651.1)(Met 1-Lys 131) was expressed in HEK293 with a polyhistidine tag at the C-terminus.
Species	Human
Source	HEK293
ProteinLength	1-131 aa
Form	Lyophilized from sterile PBS, pH 7.4.
Molecular Mass	The recombinant human IL32A comprises 137 amino acids with a predicted molecular mass of 15.7 kDa. As a result of glycosylation, it migrates as an approximately 20 kDa band in SDS-PAGE under reducing conditions.
Endotoxin	< 1.0 EU per µg of the protein as determined by the LAL method.
Purity	> 95 % as determined by SDS-PAGE
Storage	Store it under sterile conditions at -20°C to -80°C upon receiving. Recommend to aliquot the protein into smaller quantities for optimal storage. Avoid repeated freeze-thaw cycles.
Reconstitution	It is recommended that sterile water be added to the vial to prepare a stock solution of 0.2 ug/ul. Centrifuge the vial at 4°C before opening to recover the entire contents.

 Tel: 1-631-559-9269 1-516-512-3133

 Email: info@creative-biomart.com  Fax: 1-631-938-8127

 45-1 Ramsey Road, Shirley, NY 11967, USA

protein Refseq-Weblink http://www.ncbi.nlm.nih.gov/protein/NP_001012649.1

Unit ID P24001

Unit ID-Weblink <https://www.uniprot.org/uniprotkb/P24001>

GENE INFORMATION

Gene Name [IL32 interleukin 32 \[Homo sapiens \]](#)

Official Symbol [IL32](#)

Synonyms IL32; interleukin 32; interleukin-32; natural killer cell transcript 4; NK4; TAIF; TAIFb; TAIFd; interleukin-32 eta; interleukin-32 small; interleukin-32 theta; natural killer cells protein 4; tumor necrosis factor alpha-inducing factor; TAIFa; TAIFc; IL-32beta; IL-32alpha; IL-32delta; IL-32gamma;

Gene ID [9235](#)

mRNA Refseq [NM_001012631](#)

protein Refseq [NP_001012649](#)

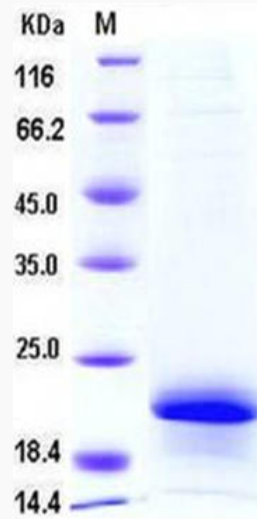
MIM [606001](#)

 Tel: 1-631-559-9269 1-516-512-3133

 Email: info@creative-biomart.com  Fax: 1-631-938-8127

 45-1 Ramsey Road, Shirley, NY 11967, USA

SDS-PAGE



 Tel: 1-631-559-9269 1-516-512-3133

 Email: info@creative-biomart.com  Fax: 1-631-938-8127

 45-1 Ramsey Road, Shirley, NY 11967, USA