

Recombinant Human IL32 Protein (Met1-Lys234), C-His tagged

Cat. No. IL32-5300H Lot. No. (See product label)

SPECIFICATION

Product Overview	Recombinant human IL32 (Met1-Lys234) fused with the C-terminal His tag was expressed in Mammalian cells.
Species	Human
Source	Mammalian Cells
ProteinLength	Met1-Lys234
Form	Lyophilized powder/frozen liquid
Molecular Mass	25.74 kDa
Endotoxin	< 1.0 EU/μg of the protein as determined by the LAL method.
Purity	>90% as determined by SDS-PAGE.
Notes	For research use only.
Storage	Use a manual defrost freezer and avoid repeated freeze thaw cycles. Store at 2 to 8 centigrade for one week. Store at -20 to -80 centigrade for twelve months from the date of receipt.
Storage Buffer	Supplied as solution form in PBS or lyophilized from PBS.

 Tel: 1-631-559-9269 1-516-512-3133

 Email: info@creative-biomart.com  Fax: 1-631-938-8127

 45-1 Ramsey Road, Shirley, NY 11967, USA

Reconstitution Reconstitute in sterile water for a stock solution.

Shipping They are shipped out with dry ice/blue ice unless customers require otherwise.

GENE INFORMATION

Gene Name IL32 interleukin 32 [Homo sapiens (human)]

Official Symbol IL32

Synonyms IL32; interleukin 32; interleukin-32; natural killer cell transcript 4; NK4; TAIF; TAIFb; TAIFd; interleukin-32 eta; interleukin-32 small; interleukin-32 theta; natural killer cells protein 4; tumor necrosis factor alpha-inducing factor; TAIFa; TAIFc; IL-32beta; IL-32alpha; IL-32delta; IL-32gamma;

Gene ID 9235

mRNA Refseq NM_001012631

Protein Refseq NP_001012649

MIM 606001

UniProt ID P24001

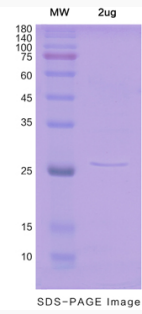
 Tel: 1-631-559-9269 1-516-512-3133

 Email: info@creative-biomart.com  Fax: 1-631-938-8127

 45-1 Ramsey Road, Shirley, NY 11967, USA



SDS-PAGE



Tel: 1-631-559-9269 1-516-512-3133

Email: info@creative-biomart.com Fax: 1-631-938-8127

45-1 Ramsey Road, Shirley, NY 11967, USA