

Recombinant Human IL32 Protein, Myc/DDK-tagged, C13 and N15-labeled

Cat. No. IL32-6150H **Lot. No.** (See product label)

SPECIFICATION

Product Overview	IL32 MS Standard C13 and N15-labeled recombinant protein (NP_001012651) with a C-terminal MYC/DDK tag, was expressed in HEK293 cells.
Species	Human
Source	HEK293
Description	This gene encodes a member of the cytokine family. The protein contains a tyrosine sulfation site, 3 potential N-myristoylation sites, multiple putative phosphorylation sites, and an RGD cell-attachment sequence. Expression of this protein is increased after the activation of T-cells by mitogens or the activation of NK cells by IL-2. This protein induces the production of TNFalpha from macrophage cells. Alternate transcriptional splice variants, encoding different isoforms, have been characterized.
Molecular Mass	14.7 kDa
AA Sequence	MCFPKVLSDDMKKCLKARMHQAIERFYDKMQNAESGRGQVMSSLAELEDDFKEGYL ETVAAYYEEQHPLELPLFEKERDGLRCRGNRSPVPDVEDPATEEPGESFCDKSYGA PRGDKEELTPQKCSEPPQSSKTRTRPLEQKLISEEDLAANDILDYKDDDDKV
Purity	> 80% as determined by SDS-PAGE and Coomassie blue staining
Stability	Stable for 3 months from receipt of products under proper storage and handling conditions.

 Tel: 1-631-559-9269 1-516-512-3133

 Email: info@creative-biomart.com  Fax: 1-631-938-8127

 45-1 Ramsey Road, Shirley, NY 11967, USA

Storage	Store at -80 centigrade. Avoid repeated freeze-thaw cycles.
Concentration	50 µg/mL as determined by BCA
Storage Buffer	100 mM glycine, 25 mM Tris-HCl, pH 7.3.
GENE INFORMATION	
Gene Name	IL32 interleukin 32 [Homo sapiens (human)]
Official Symbol	IL32
Synonyms	IL32; interleukin 32; interleukin-32; natural killer cell transcript 4; NK4; TAIF; TAIFb; TAIFd; interleukin-32 eta; interleukin-32 small; interleukin-32 theta; natural killer cells protein 4; tumor necrosis factor alpha-inducing factor; TAIFa; TAIFc; IL-32beta; IL-32alpha; IL-32delta; IL-32gamma;
Gene ID	9235
mRNA Refseq	NM_001012633
Protein Refseq	NP_001012651
MIM	606001
UniProt ID	P24001

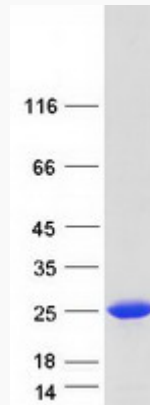
 Tel: 1-631-559-9269 1-516-512-3133

 Email: info@creative-biomart.com  Fax: 1-631-938-8127

 45-1 Ramsey Road, Shirley, NY 11967, USA



SDS-PAGE



Tel: 1-631-559-9269 1-516-512-3133

Email: info@creative-biomart.com Fax: 1-631-938-8127

45-1 Ramsey Road, Shirley, NY 11967, USA