

Active Recombinant Human IL33 protein

Cat. No. IL33-2572H Lot. No. (See product label)

SPECIFICATION

Product Overview	Recombinant Human IL-33 Protein is produced by E. coli expression system. The target protein is expressed with sequence (Ser112-Thr270) of human IL-33 (Accession #NP_001300973.1).
Species	Human
Source	E.coli
ProteinLength	Ser112-Thr270
Form	Lyophilized from a 0.22 µm filtered solution of PBS, pH 7.4.
Bio-activity	Measured by its binding ability in a functional ELISA. Immobilized Recombinant human IL33 at 10 µg/mL (100 µL/well) can bind Recombinant human IL1RL1 with a linear range of 37.8-151.4 ng/mL.
Molecular Mass	19 kDa
Endotoxin	< 0.1 EU/µg of the protein by LAL method.
Purity	> 97% by SDS-PAGE.
Storage	Store the lyophilized protein at -20°C to -80 °C for long term. After reconstitution, the protein solution is stable at -20 °C for 3 months, at 2-8 °C for up to 1 week.

 Tel: 1-631-559-9269 1-516-512-3133

 Email: info@creative-biomart.com  Fax: 1-631-938-8127

 45-1 Ramsey Road, Shirley, NY 11967, USA

Reconstitution Reconstitute to a concentration of 0.1-0.5 mg/mL in sterile distilled water.

GENE INFORMATION

Gene Name [IL33 interleukin 33 \[Homo sapiens \]](#)

Official Symbol [IL33](#)

Synonyms IL33; interleukin 33; C9orf26, chromosome 9 open reading frame 26 (NF HEV); interleukin-33; DKFZp586H0523; DVS27; DVS27 related protein; IL1F11; interleukin 1 family; member 11; NF HEV; nuclear factor for high endothelial venules; IL-33; IL-1F11; DVS27-related protein; interleukin-1 family member 11; nuclear factor from high endothelial venules; NF-HEV; NFEHEV; C9orf26; RP11-575C20.2;

Gene ID [90865](#)

mRNA Refseq [NM_001199640](#)

Protein Refseq [NP_001186569](#)

MIM [608678](#)

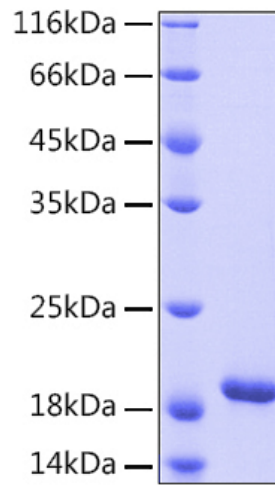
UniProt ID [O95760](#)

 Tel: 1-631-559-9269 1-516-512-3133

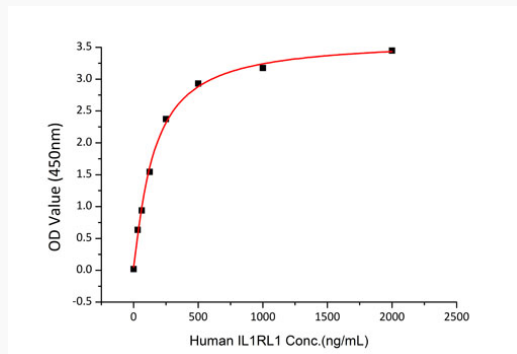
 Email: info@creative-biomart.com  Fax: 1-631-938-8127

 45-1 Ramsey Road, Shirley, NY 11967, USA

SDS-PAGE



Bio-activity



 Tel: 1-631-559-9269 1-516-512-3133

 Email: info@creative-biomart.com  Fax: 1-631-938-8127

 45-1 Ramsey Road, Shirley, NY 11967, USA