

## Active Recombinant Human IL36A Protein (Lys6-Phe158), C-His tagged, Animal-free, Carrier-free

Cat. No. IL36A-125H Lot. No. (See product label)

### SPECIFICATION

<b>Product Overview</b>	Recombinant Human IL36A Protein (Lys6-Phe158) with C-His tag was expressed in E. coli and Animal-free as well as Carrier-free.
<b>Species</b>	Human
<b>Source</b>	E.coli
<b>ProteinLength</b>	Lys6-Phe158
<b>Description</b>	Interleukin-36 alpha (IL-36 $\alpha$ ) is an 18 kDa cytokine with 154 amino acid residues. IL-36 $\alpha$ is one of the IL-36 agonists secreted from keratinocytes. When IL-36 $\alpha$ binds to the IL-36 receptor, it activates NF- $\kappa$ B and MAPK signaling pathways that induce inflammatory responses. In addition, it also stimulates the production of inflammatory cytokines, such as IFN- $\gamma$ , TNF- $\alpha$ , and IL-6.
<b>Form</b>	Lyophilized
<b>Bio-activity</b>	Measure by its ability to induce IL-8 secretion in human PBMCs. The ED50 for this effect is < 0.7 ng/mL.
<b>Molecular Mass</b>	The protein has a calculated MW of 18.05 kDa. The protein migrates as 17 kDa under reducing condition (SDS-PAGE analysis).
<b>Endotoxin</b>	< 0.1

 Tel: 1-631-559-9269 1-516-512-3133

 Email: [info@creative-biomart.com](mailto:info@creative-biomart.com)  Fax: 1-631-938-8127

 45-1 Ramsey Road, Shirley, NY 11967, USA

	EU/μg of the protein by the LAL method.
<b>Purity</b>	>98% as determined by SDS-PAGE analysis.
<b>Storage</b>	This product is stable after storage at: -20 centigrade for 12 months in lyophilized state from date of receipt. -20 or -80 centigrade for 1 month under sterile conditions after reconstitution. Avoid repeated freeze/thaw cycles.
<b>Storage Buffer</b>	Lyophilized from a 0.2 μm filtered solution of PBS, pH 7.4.
<b>Reconstitution</b>	It is recommended to reconstitute the lyophilized protein in sterile H2O to a concentration not less than 200 μg/mL and incubate the stock solution for at least 20 min to ensure sufficient re-dissolved.
<b>Shipping</b>	The product is shipped with polar packs. Upon receipt, store it immediately at -20 centigrade or lower for long term storage.

## GENE INFORMATION

<b>Gene Name</b>	IL36A interleukin 36, alpha [ <i>Homo sapiens</i> (human) ]
<b>Official Symbol</b>	IL36A
<b>Synonyms</b>	IL36A; interleukin 36, alpha; IL1F6, interleukin 1 family, member 6 (epsilon); interleukin-36 alpha; FIL1; FIL1E; IL 1F6; IL1(EPSILON); MGC129552; MGC129553; FIL1 epsilon; IL-1 epsilon; interleukin-1 epsilon; IL-1F6 (FIL-1-epsilon); interleukin 1, epsilon; interleukin-1 family member 6; interleukin 1 family, member 6 (epsilon); IL1F6; IL-1F6; FIL1(EPSILON);
<b>Gene ID</b>	27179

 Tel: 1-631-559-9269 1-516-512-3133

 Email: [info@creative-biomart.com](mailto:info@creative-biomart.com)  Fax: 1-631-938-8127

 45-1 Ramsey Road, Shirley, NY 11967, USA

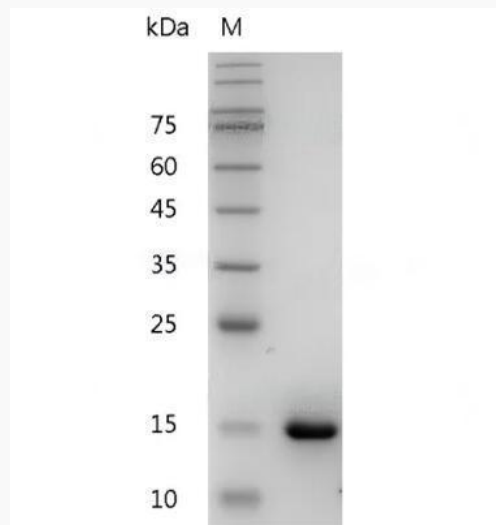
mRNA Refseq [NM\\_014440](#)

Protein Refseq [NP\\_055255](#)

MIM [605509](#)

UniProt ID [Q9UHA7](#)

**SDS-PAGE analysis  
of recombinant  
human IL-36 Alpha.**



 Tel: 1-631-559-9269 1-516-512-3133

 Email: [info@creative-biomart.com](mailto:info@creative-biomart.com)  Fax: 1-631-938-8127

 45-1 Ramsey Road, Shirley, NY 11967, USA