

Recombinant Active Human IL36A Protein, His-tagged(C-ter)

Cat. No. IL36A-195H Lot. No. (See product label)

SPECIFICATION

Product Overview	Recombinant Active Human IL36A Protein with His tag (C-ter) was expressed in E. coli.
Species	Human
Source	E.coli
Description	The protein encoded by this gene is a cytokine that can activate NF-kappa-B and MAPK signaling pathways to generate an inflammatory response. The encoded protein functions primarily in skin and demonstrates increased expression in psoriasis. In addition, decreased expression of this gene has been linked to a poor prognosis in both hepatocellular carcinoma and colorectal cancer patients.
Form	Powder
Bio-activity	Determined by its ability to induce IL-8 secretion in human PBMCs. The ED50 for this effect is < 0.7 ng/mL.
AA Sequence	MKIDTPQQGSIQDINHRVWVLQDQTLIAVPRKDRMSPTIALISCRHVETLEKDRGNP IYLGLNGLNLCLMCAKVGDQPTLQLKEKDIMDLYNQPEPVKSFLFYHSQSGRNSTFE SVAFPGWFIASSEGGCPLILTQELGKANTTDFGLTMLF
Endotoxin	Endotoxin level is less than 0.1 EU/μg of the protein, as determined by the LAL test.
Purity	> 98% (by SDS-PAGE)

 Tel: 1-631-559-9269 1-516-512-3133

 Email: info@creative-biomart.com  Fax: 1-631-938-8127

 45-1 Ramsey Road, Shirley, NY 11967, USA

Applications	SDS-PAGE
Notes	For laboratory research only, not for drug, diagnostic or other use.
Storage	Lyophilized protein should be stored at -20°C. After reconstitution, aliquot and store at -20°C or -80°C for up to one month. Storage in frost free freezers is not recommended. Avoid repeated freeze/thaw cycles. Suggest spin the vial prior to opening.
Storage Buffer	PBS (pH 7.4)
Reconstitution	It is recommended to reconstitute the lyophilized protein in sterile water to a concentration not less than 100 µg/mL and incubate the stock solution for at least 20 min at room temperature to make sure the protein is dissolved completely.

GENE INFORMATION

Gene Name	IL36A interleukin 36, alpha [Homo sapiens]
Official Symbol	IL36A
Synonyms	IL36A; interleukin 36, alpha; IL1F6, interleukin 1 family, member 6 (epsilon); interleukin-36 alpha; FIL1; FIL1E; IL 1F6; IL1(EPSILON); MGC129552; MGC129553; FIL1 epsilon; IL-1 epsilon; interleukin-1 epsilon; IL-1F6 (FIL-1-epsilon); interleukin 1, epsilon; interleukin-1 family member 6; interleukin 1 family, member 6 (epsilon); IL1F6; IL-1F6; FIL1(EPSILON);
Gene ID	27179
mRNA Refseq	NM_014440

 Tel: 1-631-559-9269 1-516-512-3133

 Email: info@creative-biomart.com  Fax: 1-631-938-8127

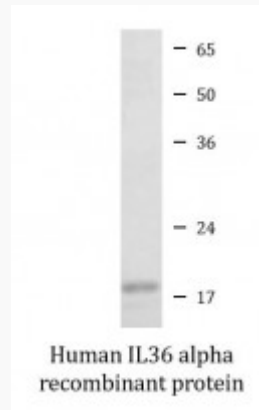
 45-1 Ramsey Road, Shirley, NY 11967, USA

Protein Refseq NP_055255

MIM 605509

UniProt ID Q9UHA7

SDS-PAGE



 Tel: 1-631-559-9269 1-516-512-3133

 Email: info@creative-biomart.com  Fax: 1-631-938-8127

 45-1 Ramsey Road, Shirley, NY 11967, USA