

Recombinant Human IL36A protein, His-tagged

Cat. No. IL36A-2578H Lot. No. (See product label)

SPECIFICATION

Product Overview Active Recombinant Human IL-36 alpha/IL-1F6 Protein is produced by E. coli expression system. The target protein is expressed with sequence (Met1-Phe158) of human IL-36 alpha (Accession #NP_055255.1) fused with a 6xHis tag at the C-terminus.

Species Human

Source E.coli

ProteinLength Met1-Phe158

Form Lyophilized from a 0.22 µm filtered solution of PBS, pH 7.4.

Molecular Mass 17 kDa

Endotoxin < 1.0 EU/µg of the protein by LAL method.

Purity > 95% by SDS-PAGE.

Storage Store the lyophilized protein at -20°C to -80 °C for long term.
After reconstitution, the protein solution is stable at -20 °C for 3 months, at 2-8 °C for up to 1 week.

Reconstitution Reconstitute to a concentration of 0.1-0.5 mg/mL in sterile distilled water.

 Tel: 1-631-559-9269 1-516-512-3133

 Email: info@creative-biomart.com  Fax: 1-631-938-8127

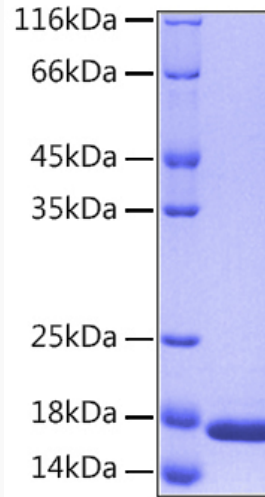
 45-1 Ramsey Road, Shirley, NY 11967, USA

GENE INFORMATION

Gene Name	IL36A interleukin 36, alpha [Homo sapiens]
Official Symbol	IL36A
Synonyms	IL36A; interleukin 36, alpha; IL1F6, interleukin 1 family, member 6 (epsilon); interleukin-36 alpha; FIL1; FIL1E; IL 1F6; IL1(EPSILON); MGC129552; MGC129553; FIL1 epsilon; IL-1 epsilon; interleukin-1 epsilon; IL-1F6 (FIL-1-epsilon); interleukin 1, epsilon; interleukin-1 family member 6; interleukin 1 family, member 6 (epsilon); IL1F6; IL-1F6; FIL1(EPSILON);
Gene ID	27179
mRNA Refseq	NM_014440
Protein Refseq	NP_055255
MIM	605509
UniProt ID	Q9UHA7

 Tel: 1-631-559-9269 1-516-512-3133 Email: info@creative-biomart.com  Fax: 1-631-938-8127 45-1 Ramsey Road, Shirley, NY 11967, USA

SDS-PAGE



 Tel: 1-631-559-9269 1-516-512-3133

 Email: info@creative-biomart.com  Fax: 1-631-938-8127

 45-1 Ramsey Road, Shirley, NY 11967, USA