

Recombinant Human IL36A Protein, Myc/DDK-tagged, C13 and N15-labeled

Cat. No. IL36A-3232H **Lot. No.** (See product label)

SPECIFICATION

Product Overview	IL1F6 MS Standard C13 and N15-labeled recombinant protein (NP_055255) with a C-terminal MYC/DDK tag, was expressed in HEK293 cells.
Species	Human
Source	HEK293
Description	The protein encoded by this gene is a cytokine that can activate NF-kappa-B and MAPK signaling pathways to generate an inflammatory response. The encoded protein functions primarily in skin and demonstrates increased expression in psoriasis. In addition, decreased expression of this gene has been linked to a poor prognosis in both hepatocellular carcinoma and colorectal cancer patients.
Molecular Mass	17.7 kDa
AA Sequence	MEKALKIDTPQRGSIQDINHRVWVLQDQTLIAVPRKDRMSPVTIALISCRHVETLEKD RGNPIYLGLNGLNLCLMCAKVG DQPTLQLKEKDIMDLYNQPEPVKSFLFYHSQSGR NSTFESVAFPGWFIAVSSEGGCPLILTQELGKANTTDFGLTMLFTRTRPLEQKLISEE DLAANDILDYKDDDDKV
Purity	> 80% as determined by SDS-PAGE and Coomassie blue staining
Stability	Stable for 3 months from receipt of products under proper storage and handling conditions.

 Tel: 1-631-559-9269 1-516-512-3133

 Email: info@creative-biomart.com  Fax: 1-631-938-8127

 45-1 Ramsey Road, Shirley, NY 11967, USA

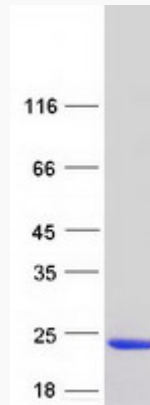
Storage	Store at -80 centigrade. Avoid repeated freeze-thaw cycles.
Concentration	50 µg/mL as determined by BCA
Storage Buffer	100 mM glycine, 25 mM Tris-HCl, pH 7.3.
GENE INFORMATION	
Gene Name	IL36A interleukin 36 alpha [Homo sapiens (human)]
Official Symbol	IL36A
Synonyms	IL36A; interleukin 36, alpha; IL1F6, interleukin 1 family, member 6 (epsilon); interleukin-36 alpha; FIL1; FIL1E; IL 1F6; IL1(EPSILON); MGC129552; MGC129553; FIL1 epsilon; IL-1 epsilon; interleukin-1 epsilon; IL-1F6 (FIL-1-epsilon); interleukin 1, epsilon; interleukin-1 family member 6; interleukin 1 family, member 6 (epsilon); IL1F6; IL-1F6; FIL1(EPSILON);
Gene ID	27179
mRNA Refseq	NM_014440
Protein Refseq	NP_055255
MIM	605509
UniProt ID	Q9UHA7

 Tel: 1-631-559-9269 1-516-512-3133

 Email: info@creative-biomart.com  Fax: 1-631-938-8127

 45-1 Ramsey Road, Shirley, NY 11967, USA

SDS-PAGE



 Tel: 1-631-559-9269 1-516-512-3133

 Email: info@creative-biomart.com  Fax: 1-631-938-8127

 45-1 Ramsey Road, Shirley, NY 11967, USA