

Active GMP Recombinant Human IL36A protein

Cat. No. IL36A-4338HG **Lot. No.** (See product label)

SPECIFICATION

Product Overview Recombinant Human IL36A was produced in E. coli using non-animal reagents in an animal-free facility under cGMP guidelines.

Species Human

Source E.coli

Description Interleukin-36 (IL-36) is a pro-inflammatory cytokine which plays an important role in the pathophysiology of several diseases. IL-36 α , IL-36 β , and IL-36 γ (formerly IL-1F6, IL-1F8, and IL-1F9) are IL-1 family members that signal through the IL-1 receptor family members IL-1Rrp2 (IL-1RL2) and IL-1RAcP. Studies showed IL-36 α is mainly found in skin and lymphoid tissues, but also in fetal brain, trachea, stomach and intestine. Notably, IL-36 alpha is the only novel IL-1 family member expressed on T-cells. Recombinant human interleukin-36 alpha contains 158 amino acids residues which is a single non-glycosylated polypeptide and it is 30 % a.a. identical to IL-1ra, and 27 %, 31 %, 36 %, 46 %, 57% and 28 % a.a. identical to IL-1 β , IL-36Ra/IL-1F5, IL-37/IL-1F7, IL-36 β /IL-1F8, IL-36 γ /IL-1F9 and IL-1F10.

Form Lyophilized from a 0.2 μ m filtered concentrated solution in 2 \times PBS, pH 7.4.

Bio-activity Fully biologically active when compared to standard. The specific activity determined by its ability in a functional ELISA. Immobilized rHuIL-36 α at 1 μ g/mL can bind recombinant human IL-1 Rrp2 Fc Chimera with a range of 0.15-5 μ g/mL.

 Tel: 1-631-559-9269 1-516-512-3133

 Email: info@creative-biomart.com  Fax: 1-631-938-8127

 45-1 Ramsey Road, Shirley, NY 11967, USA

Molecular Mass	Approximately 17.7 kDa, a single non-glycosylated polypeptide chain containing 158 amino acids.
AA Sequence	MEKALKIDTPQQGSIQDINHRVWVLQDQTLIAVPRKDRMSPVTIALISCRHVETLEKD RGNPIYLGLNGLNLCLMCAKVGDQPTLQLKEKDIMDLYNQPEPVKSFLFYHSQSGR NSTFESVAFPGWFIAVSSEGGCPLILTQELGKANTTDFGLTMLF
Endotoxin	Less than 1 EU/μg of rHuIL-36α, 158a.a. as determined by LAL method.
Purity	> 95 % by SDS-PAGE and HPLC analyses.
Storage	This lyophilized preparation is stable at 2-8 centigrade, but should be kept at -20 centigrade for long term storage, preferably des centigradecated. Upon reconstitution, the preparation is stable for up to one week at 2-8 centigrade. For maximal stability, apportion the reconstituted preparation into working aliquots and store at -20 centigrade to -70 centigrade. Avoid repeated freeze/thaw centigrade centigradeles.
Reconstitution	Reconstitute in sterile distilled water or aqueous buffer containing 0.1 % BSA to a concentration of 0.1-1.0 mg/mL. Stock solutions should be apportioned into working aliquots and stored at ≤ -20 centigrade. Further dilutions should be made in appropriate buffered solutions.
Quality Statement	Our GMP proteins are produced according to relevant sections of the following documents: WHO TRS, No. 822, 1992 Annex 1, Good Manufacturing Practices for Biological Products; USP Chapter 1043, Ancillary Materials for Cell, Gene and Tissue-Engineered Products and USP Chapter 92, Growth Factors and Cytokines Used in Cell Therapy Manufacturing.
Shipping	The product is shipped at ambient temperature. Upon receipt, store it immediately at the recommended temperature.

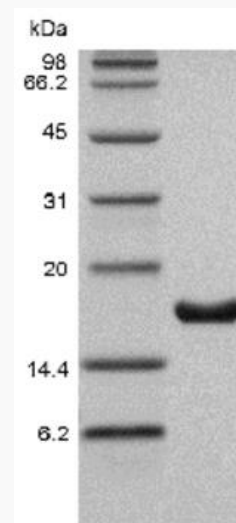
 Tel: 1-631-559-9269 1-516-512-3133

 Email: info@creative-biomart.com  Fax: 1-631-938-8127

 45-1 Ramsey Road, Shirley, NY 11967, USA

GENE INFORMATION

Gene Name	IL36A interleukin 36, alpha [Homo sapiens (human)]
Official Symbol	IL36A
Synonyms	FIL1; FIL1E; IL1F6; IL-1F6; IL1(EPSILON); FIL1(EPSILON)
Gene ID	27179
mRNA Refseq	NM_014440.2
Protein Refseq	NP_055255.1
MIM	605509
UniProt ID	Q9UHA7



Tel: 1-631-559-9269 1-516-512-3133

Email: info@creative-biomart.com Fax: 1-631-938-8127

45-1 Ramsey Road, Shirley, NY 11967, USA