

## Active Recombinant Human IL36A protein

**Cat. No.** IL36A-507H    **Lot. No.** (See product label)

### SPECIFICATION

<b>Product Overview</b>	Active Recombinant Human IL36A protein(Q9UHA7) (Lys6-Phe158) was expressed and purified in E. coli, with two additional amino acids (Gly & Pro) at the N-terminus.
<b>Species</b>	Human
<b>Source</b>	E. coli
<b>ProteinLength</b>	6-158 aa
<b>Form</b>	Lyophilized from a 0.2 µm filtered concentrated solution in 20 mM Tris, 300 mM NaCl, pH 8.0, 0.1 % Tween 80.
<b>Bio-activity</b>	Fully biologically active when compared to standard. The ED50 as determined by inducing IL-8 secretion in human preadipocytes is less than 10 ng/ml, corresponding to a specific activity of > 1.0 × 10 <sup>5</sup> IU/mg.
<b>Molecular Mass</b>	Approximately 17.1 kDa, a single non-glycosylated polypeptide chain containing 153 amino acids.
<b>AASequence</b>	KIDTPQQGSI QDINHRVWVL QDQTLIAVPR KDRMSPVTIA LISCRHVETL EKDRGNPIYL GLNGLNLCLM CAKVGDQPTL QLKEKDIMDL YNQPEPVKSF LFYHSQSGRN STFESVAFPG WFIAVSSEGG CPLILTQELG KANTTDFGLT MLF
<b>Endotoxin</b>	Less than 1 EU/µg of rHuIL-36α, 153a.a. as determined by LAL method.

 Tel: 1-631-559-9269    1-516-512-3133

 Email: [info@creative-biomart.com](mailto:info@creative-biomart.com)     Fax: 1-631-938-8127

 45-1 Ramsey Road, Shirley, NY 11967, USA

<b>Purity</b>	> 95 % by SDS-PAGE and HPLC analyses.
<b>Storage</b>	Use a manual defrost freezer and avoid repeated freeze-thaw cycles. - 12 months from date of receipt, -20 to -70 °C as supplied. - 1 month, 2 to 8 °C under sterile conditions after reconstitution. - 3 months, -20 to -70 °C under sterile conditions after reconstitution.
<b>Reconstitution</b>	We recommend that this vial be briefly centrifuged prior to opening to bring the contents to the bottom. Reconstitute in sterile distilled water or aqueous buffer containing 0.1 % BSA to a concentration of 0.1-1.0 mg/ml. Stock solutions should be apportioned into working aliquots and stored at ≤ -20°C.

## GENE INFORMATION

<b>Gene Name</b>	IL36A interleukin 36, alpha [ Homo sapiens ]
<b>Official Symbol</b>	IL36A
<b>Synonyms</b>	IL36A; interleukin 36, alpha; IL1F6, interleukin 1 family, member 6 (epsilon); interleukin-36 alpha; FIL1; FIL1E; IL 1F6; IL1(EPSILON); MGC129552; MGC129553; FIL1 epsilon; IL-1 epsilon; interleukin-1 epsilon; IL-1F6 (FIL-1-epsilon); interleukin 1, epsilon; interleukin-1 family member 6; interleukin 1 family, member 6 (epsilon); IL1F6; IL-1F6; FIL1(EPSILON);
<b>Gene ID</b>	27179
<b>mRNA Refseq</b>	NM_014440
<b>Protein Refseq</b>	NP_055255
<b>MIM</b>	605509

 Tel: 1-631-559-9269 1-516-512-3133

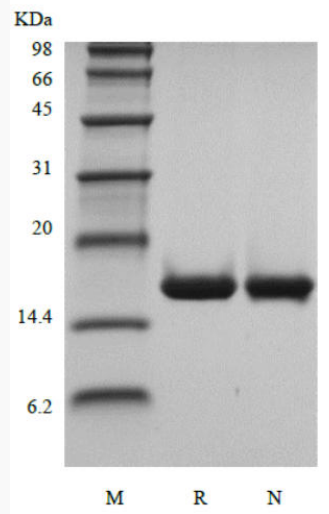
 Email: [info@creative-biomart.com](mailto:info@creative-biomart.com)  Fax: 1-631-938-8127

 45-1 Ramsey Road, Shirley, NY 11967, USA

UniProt ID

Q9UHA7

SDS-PAGE



 Tel: 1-631-559-9269 1-516-512-3133

 Email: [info@creative-biomart.com](mailto:info@creative-biomart.com)  Fax: 1-631-938-8127

 45-1 Ramsey Road, Shirley, NY 11967, USA