

Recombinant Human IL36A protein, His-tagged

Cat. No. IL36A-7293H Lot. No. (See product label)

SPECIFICATION

Product Overview	Recombinant Human IL36A protein(Q9UHA7) (Lys 6-Phe158) was expressed in E. coli with a polyhistidine tag at the N-terminus.
Species	Human
Source	E. coli
ProteinLength	6-158 aa
Form	Lyophilized from sterile PBS, pH 7.4.
Molecular Mass	The recombinant human IL1F6 consists of 169 amino acids and predicts a molecular mass of 19.2 KDa. It migrates as an approximately 20 KDa band in SDS-PAGE under reducing conditions.
Purity	> 99 % as determined by SDS-PAGE
Storage	Store it under sterile conditions at -20°C to -80°C upon receiving. Recommend to aliquot the protein into smaller quantities for optimal storage. Avoid repeated freeze-thaw cycles.
Reconstitution	It is recommended that sterile water be added to the vial to prepare a stock solution of 0.2 ug/ul. Centrifuge the vial at 4°C before opening to recover the entire contents.

GENE INFORMATION

 Tel: 1-631-559-9269 1-516-512-3133

 Email: info@creative-biomart.com  Fax: 1-631-938-8127

 45-1 Ramsey Road, Shirley, NY 11967, USA

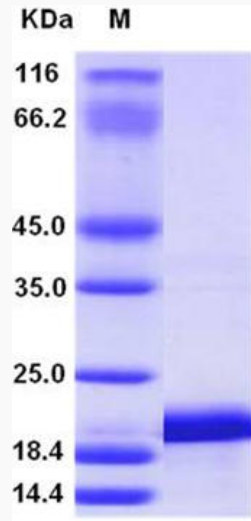
Gene Name	IL36A interleukin 36, alpha [Homo sapiens]
Official Symbol	IL36A
Synonyms	IL36A; interleukin 36, alpha; IL1F6, interleukin 1 family, member 6 (epsilon); interleukin-36 alpha; FIL1; FIL1E; IL 1F6; IL1(EPSILON); MGC129552; MGC129553; FIL1 epsilon; IL-1 epsilon; interleukin-1 epsilon; IL-1F6 (FIL-1-epsilon); interleukin 1, epsilon; interleukin-1 family member 6; interleukin 1 family, member 6 (epsilon); IL1F6; IL-1F6; FIL1(EPSILON);
Gene ID	27179
mRNA Refseq	NM_014440
Protein Refseq	NP_055255
MIM	605509
UniProt ID	Q9UHA7

 Tel: 1-631-559-9269 1-516-512-3133

 Email: info@creative-biomart.com  Fax: 1-631-938-8127

 45-1 Ramsey Road, Shirley, NY 11967, USA

SDS-PAGE



 Tel: 1-631-559-9269 1-516-512-3133

 Email: info@creative-biomart.com  Fax: 1-631-938-8127

 45-1 Ramsey Road, Shirley, NY 11967, USA