

Active Recombinant Human IL36B Protein (Arg5-Glu157), C-His tagged, Animal-free, Carrier-free

Cat. No. IL36B-123H Lot. No. (See product label)

SPECIFICATION

Product Overview	Recombinant Human IL36B Protein (Arg5-Glu157) with C-His tag was expressed in E. coli and Animal-free as well as Carrier-free.
Species	Human
Source	E.coli
ProteinLength	Arg5-Glu157
Description	Interleukin-36 beta (IL-36 β) is an 18 kDa cytokine with 154 amino acid residues. IL-36 β , the ligand of IL-36R, is expressed in keratinocytes and plays a significant role in inflammatory responses. IL-36 β regulates biological functions like the differentiation of T cells. Moreover, IL-36 β recruits neutrophils via inducing the expression of cytokines and chemokines, such as IL-17C, granulocyte colony-stimulating factor (G-CSF), IL-8, CXCL-1, and tumor necrosis factor (TNF).
Form	Lyophilized
Bio-activity	Measure by its ability to induce IL-8 secretion in human PBMCs. The ED50 for this effect is < 0.2 ng/mL.
Molecular Mass	The protein has a calculated MW of 18.17 kDa. The protein migrates as 18 kDa under reducing condition (SDS-PAGE analysis).

 Tel: 1-631-559-9269 1-516-512-3133

 Email: info@creative-biomart.com  Fax: 1-631-938-8127

 45-1 Ramsey Road, Shirley, NY 11967, USA

Endotoxin	< 0.1 EU/μg of the protein by the LAL method.
Purity	>98% as determined by SDS-PAGE analysis.
Storage	This product is stable after storage at: -20 centigrade for 12 months in lyophilized state from date of receipt. -20 or -80 centigrade for 1 month under sterile conditions after reconstitution. Avoid repeated freeze/thaw cycles.
Storage Buffer	Lyophilized from a 0.2 μm filtered solution of PBS, pH 7.4.
Reconstitution	It is recommended to reconstitute the lyophilized protein in sterile H2O to a concentration not less than 200 μg/mL and incubate the stock solution for at least 20 min to ensure sufficient re-dissolved.
Shipping	The product is shipped with polar packs. Upon receipt, store it immediately at -20 centigrade or lower for long term storage.

GENE INFORMATION

Gene Name	IL36B interleukin 36, beta [<i>Homo sapiens (human)</i>]
Official Symbol	IL36B
Synonyms	IL36B; interleukin 36, beta; IL1F8, interleukin 1 family, member 8 (eta); interleukin-36 beta; FIL1; FIL1 (ETA); IL 1F8; IL 1H2; IL1 ETA; IL1H2; MGC126880; MGC126882; FIL1 eta; IL-1 eta; IL-1F8 (FIL1-eta); interleukin-1 eta; interleukin 1, eta; interleukin-1 homolog 2; Interleukin-1 Superfamily e; family of interleukin 1-eta; interleukin-1 family member 8; IL1F8 (Canonical product IL-1F8a); interleukin 1 family, member 8 (eta); FIL1H; IL1F8; IL-1F8; IL-1H2; IL1-ETA; FIL1-(ETA); FIL1-(ETA);

 Tel: 1-631-559-9269 1-516-512-3133

 Email: info@creative-biomart.com  Fax: 1-631-938-8127

 45-1 Ramsey Road, Shirley, NY 11967, USA

Gene ID 27177

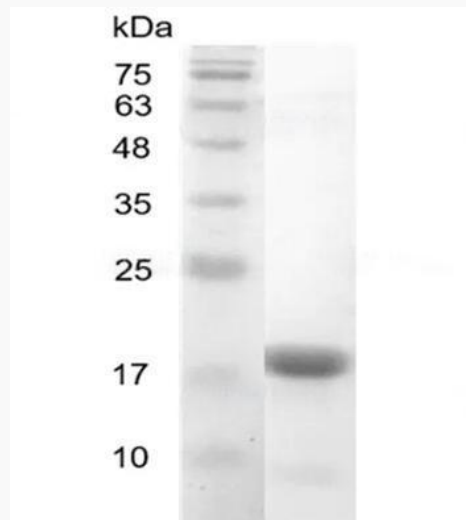
mRNA Refseq NM_173178

Protein Refseq NP_775270

MIM 605508

UniProt ID Q9NZH7

**SDS-PAGE analysis
of recombinant
human IL-36 Beta.**



 Tel: 1-631-559-9269 1-516-512-3133

 Email: info@creative-biomart.com  Fax: 1-631-938-8127

 45-1 Ramsey Road, Shirley, NY 11967, USA