

Active Recombinant Human IL36B protein

Cat. No. IL36B-140H Lot. No. (See product label)

SPECIFICATION

Product Overview	Recombinant Human IL36B was expressed in E. coli.
Species	Human
Source	E.coli
Form	Lyophilized from a 0.2 µm filtered solution in PBS (with BSA as a carrier protein)
Bio-activity	IL-36 beta can bind to human IL-1 Rrp2 Fc Chimera with a linear range of 0.15-5 µg/mL as determined by its binding ability in a functional ELISA
Molecular Mass	17.5 kDa
Endotoxin	<1.0 EU/µg of recombinant protein as determined by the LAL method.
Purity	>95%
Applications	Cell Assay
Storage	The lyophilized protein is stable for at least one year from date of receipt at -70 centigrade. Upon reconstitution, this cytokine can be stored in working aliquots at 2 centigrade - 8 centigrade for one month, or at -20 centigrade for six months, with a carrier protein without detectable loss of activity. Avoid repeated freeze/thaw cycles.
Reconstitution	Reconstitute in sterile PBS at 100g/mL (containing at least 0.1% human or bovine

 Tel: 1-631-559-9269 1-516-512-3133

 Email: info@creative-biomart.com  Fax: 1-631-938-8127

 45-1 Ramsey Road, Shirley, NY 11967, USA

serum albumin)

GENE INFORMATION

Gene Name IL36B interleukin 36, beta [Homo sapiens]

Official Symbol IL36B

Synonyms IL36B; interleukin 36, beta; IL1F8, interleukin 1 family, member 8 (eta); interleukin-36 beta; FIL1; FIL1 (ETA); IL 1F8; IL 1H2; IL1 ETA; IL1H2; MGC126880; MGC126882; FIL1 eta; IL-1 eta; IL-1F8 (FIL1-eta); interleukin-1 eta; interleukin 1, eta; interleukin-1 homolog 2; Interleukin-1 Superfamily e; family of interleukin 1-eta; interleukin-1 family member 8; IL1F8 (Canonical product IL-1F8a); interleukin 1 family, member 8 (eta); FIL1H; IL1F8; IL-1F8; IL-1H2; IL1-ETA; FIL1-(ETA); FIL1-(ETA);

Gene ID 27177

mRNA Refseq NM_014438

Protein Refseq NP_055253

MIM 605508

UniProt ID Q9NZH7

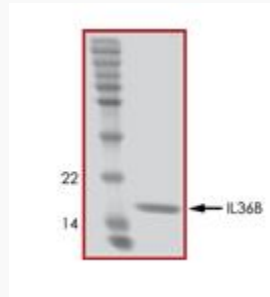
Chromosome Location 2q14

Function cytokine activity; interleukin-1 receptor binding;

 Tel: 1-631-559-9269 1-516-512-3133

 Email: info@creative-biomart.com  Fax: 1-631-938-8127

 45-1 Ramsey Road, Shirley, NY 11967, USA



 Tel: 1-631-559-9269 1-516-512-3133

 Email: info@creative-biomart.com  Fax: 1-631-938-8127

 45-1 Ramsey Road, Shirley, NY 11967, USA