

## Recombinant Active Human IL36B Protein, His-tagged(C-ter)

Cat. No. IL36B-197H Lot. No. (See product label)

### SPECIFICATION

<b>Product Overview</b>	Recombinant Active Human IL36B Protein with His tag (C-ter) was expressed in E. coli.
<b>Species</b>	Human
<b>Source</b>	E.coli
<b>Description</b>	The protein encoded by this gene is a member of the interleukin 1 cytokine family. Protein structure modeling indicated that this cytokine may contain a 12-stranded beta-trefoil structure that is conserved between IL1A (IL-A alpha) and IL1B (IL-1 beta). This gene and eight other interleukin 1 family genes form a cytokine gene cluster on chromosome 2. Two alternatively spliced transcript variants encoding distinct isoforms have been reported. [provided by RefSeq, Jul 2008]
<b>Form</b>	Powder
<b>Bio-activity</b>	Determined by its ability to induce IL-8 secretion in human PBMCs. The ED50 for this effect is < 0.2 ng/mL.
<b>AA Sequence</b>	MREAAPKSYAIRDSRQMVVVLSGNSLIAAPLSRSIKPVTLHLIACRDTEFSDKEKGN MVYLGIKGKDLCLFCAEIQGKPTLQLKEKNIMDLVVEKKAQKPFLLFFHNKEGSTSVFQ SVSYPGWFIATSTTSGQPFLTKERGITNNTNFYLDSE
<b>Endotoxin</b>	Endotoxin level is less than 0.1 EU/μg of the protein, as determined by the LAL test.

 Tel: 1-631-559-9269 1-516-512-3133

 Email: [info@creative-biomart.com](mailto:info@creative-biomart.com)  Fax: 1-631-938-8127

 45-1 Ramsey Road, Shirley, NY 11967, USA

<b>Purity</b>	> 98% (by SDS-PAGE)
<b>Applications</b>	SDS-PAGE
<b>Notes</b>	For laboratory research only, not for drug, diagnostic or other use.
<b>Storage</b>	Lyophilized protein should be stored at -20°C. After reconstitution, aliquot and store at -20°C or -80°C for up to one month. Storage in frost free freezers is not recommended. Avoid repeated freeze/thaw cycles. Suggest spin the vial prior to opening.
<b>Storage Buffer</b>	PBS (pH 7.4)
<b>Reconstitution</b>	It is recommended to reconstitute the lyophilized protein in sterile water to a concentration not less than 100 µg/mL and incubate the stock solution for at least 20 min at room temperature to make sure the protein is dissolved completely.

## GENE INFORMATION

<b>Gene Name</b>	IL36B interleukin 36, beta [ Homo sapiens ]
<b>Official Symbol</b>	IL36B
<b>Synonyms</b>	IL36B; interleukin 36, beta; IL1F8, interleukin 1 family, member 8 (eta); interleukin-36 beta; FIL1; FIL1 (ETA); IL 1F8; IL 1H2; IL1 ETA; IL1H2; MGC126880; MGC126882; FIL1 eta; IL-1 eta; IL-1F8 (FIL1-eta); interleukin-1 eta; interleukin 1, eta; interleukin-1 homolog 2; Interleukin-1 Superfamily e; family of interleukin 1-eta; interleukin-1 family member 8; IL1F8 (Canonical product IL-1F8a); interleukin 1 family, member 8 (eta); FIL1H; IL1F8; IL-1F8; IL-1H2; IL1-ETA; FIL1-(ETA); FIL1-(ETA);
<b>Gene ID</b>	27177

 Tel: 1-631-559-9269 1-516-512-3133

 Email: [info@creative-biomart.com](mailto:info@creative-biomart.com)  Fax: 1-631-938-8127

 45-1 Ramsey Road, Shirley, NY 11967, USA

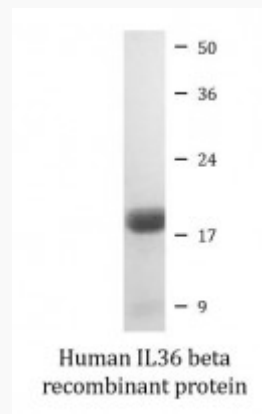
mRNA Refseq [NM\\_014438](#)

Protein Refseq [NP\\_055253](#)

MIM [605508](#)

UniProt ID [Q9NZH7](#)

#### SDS-PAGE



 Tel: 1-631-559-9269 1-516-512-3133

 Email: [info@creative-biomart.com](mailto:info@creative-biomart.com)  Fax: 1-631-938-8127

 45-1 Ramsey Road, Shirley, NY 11967, USA