

Recombinant Human IL36B Protein (Arg5-Met164), N-His tagged

Cat. No. IL36B-3513H **Lot. No.** (See product label)

SPECIFICATION

Product Overview	Recombinant human IL36B/IL-1F8 (Arg5-Met164) protein fused with the N-His tag was expressed in E. coli.
Species	Human
Source	E.coli
ProteinLength	Arg5-Met164
Molecular Mass	20.35 kDa
Purity	>90 % as determined by SDS-PAGE.
Notes	For research use only.
Storage	Use a manual defrost freezer and avoid repeated freeze thaw cycles. Store at 2 to 8 centigrade for one week. Store at -20 to -80 centigrade for twelve months from the date of receipt.
Storage Buffer	0.01M PBS, pH 7.4, 0.02 % NLS
Reconstitution	Reconstitute in sterile water for a stock solution.
Shipping	In general, proteins are provided as lyophilized powder/frozen liquid. They are

 Tel: 1-631-559-9269 1-516-512-3133

 Email: info@creative-biomart.com  Fax: 1-631-938-8127

 45-1 Ramsey Road, Shirley, NY 11967, USA

shipped out with dry ice/blue ice unless customers require otherwise.

GENE INFORMATION

Gene Name IL36B interleukin 36, beta [Homo sapiens (human)]

Official Symbol IL36B

Synonyms IL36B; interleukin 36, beta; IL1F8, interleukin 1 family, member 8 (eta); interleukin-36 beta; FIL1; FIL1 (ETA); IL 1F8; IL 1H2; IL1 ETA; IL1H2; MGC126880; MGC126882; FIL1 eta; IL-1 eta; IL-1F8 (FIL1-eta); interleukin-1 eta; interleukin 1, eta; interleukin-1 homolog 2; Interleukin-1 Superfamily e; family of interleukin 1-eta; interleukin-1 family member 8; IL1F8 (Canonical product IL-1F8a); interleukin 1 family, member 8 (eta); FIL1H; IL1F8; IL-1F8; IL-1H2; IL1-ETA; FIL1-(ETA); FIL1-(ETA);

Gene ID 27177

mRNA Refseq NM_014438

Protein Refseq NP_055253

MIM 605508

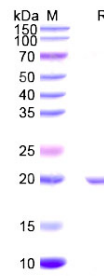
UniProt ID Q9NZH7

 Tel: 1-631-559-9269 1-516-512-3133

 Email: info@creative-biomart.com  Fax: 1-631-938-8127

 45-1 Ramsey Road, Shirley, NY 11967, USA

SDS-PAGE



 Tel: 1-631-559-9269 1-516-512-3133

 Email: info@creative-biomart.com  Fax: 1-631-938-8127

 45-1 Ramsey Road, Shirley, NY 11967, USA