

Recombinant Human IL36B protein

Cat. No. IL36B-508H Lot. No. (See product label)

SPECIFICATION

Product Overview	Recombinant Human IL36B (Interleukin-36 beta, 157a.a.) protein was expressed in Escherichia coli.
Species	Human
Source	E.coli
ProteinLength	157
Description	Interleukin-36 (IL-36) is a pro-inflammatory cytokine which plays an important role in the pathophysiology of several diseases. IL-36 α , IL-36 β , and IL-36 γ (formerly IL-1F6, IL-1F8, and IL-1F9) are IL-1 family members that signal through the IL-1 receptor family members IL-1Rrp2 (IL-1RL2) and IL-1RAcP. IL-36 beta is reported to be expressed at higher levels in psoriatic plaques than in symptomless psoriatic skin or healthy control skin. Furthermore, it can stimulate production of interleukin-6 and interleukin-8 in synovial fibroblasts, articular chondrocytes and mature adipocytes. Two alternatively spliced transcript variants encode distinct (164 or 157 residues) protein isoforms that differ in their C-terminal 70 amino acid residues have been reported and IL-36 β isoform 2 is synthesized as a 157 a.a. protein. Specifically, human IL-36 β shares low sequence identity with IL-1 β , IL-36RA, IL-36 α and IL-36 γ .
Form	Lyophilized from a 0.2 μ m filtered concentrated solution in PBS, pH 7.4.
Bio-activity	Fully biologically active when compared to standard. The specific activity is

 Tel: 1-631-559-9269 1-516-512-3133

 Email: info@creative-biomart.com  Fax: 1-631-938-8127

 45-1 Ramsey Road, Shirley, NY 11967, USA

determined by its binding ability in a functional ELISA. Immobilized rHuIL-36 β at 1 g/mL can bind recombinant human IL-1 Rrp2 Fc Chimera with a range of 0.15-5 g/mL.

Molecular Mass

Approximately 17.7kDa, a single non-glycosylated polypeptide chain containing 157 amino acids.

AA Sequence

MNPQREAAPKSYAIRDSRQMVVVLSGNSLIAAPLSRSIKPVTLHLIACRDTEFSDKEK
GNMVYLGIKGKDLCLFCAEIQQKPTLQLKEKNIMDLVEKKAQKPFLFFHNKEGSTS
VFQSVSYPGWFIATSTTSGQPIFLTKERGITNNTNFYLDVSE

Endotoxin

Less than 1 EU/ μ g of rHuIL-36 β , 157a.a. as determined by LAL method.

Purity

>97% by SDS-PAGE and HPLC analysis.

Storage

Use a manual defrost freezer and avoid repeated freeze-thaw cycles. 12 months from date of receipt, -20 to -70 centigrade as supplied. 1 month, 2 to 8 centigrade under sterile conditions after reconstitution. 3 months, -20 to -70 centigrade under sterile conditions after reconstitution.

Reconstitution

We recommend that this vial be briefly centrifuged prior to opening to bring the contents to the bottom. Reconstitute in sterile distilled water or aqueous buffer containing 0.1 % BSA to a concentration of 0.1-1.0 mg/mL. Stock solutions should be apportioned into working aliquots and stored at \leq -20 centigrade. Further dilutions should be made in appropriate buffered solutions.

GENE INFORMATION

Gene Name

IL36B

Official Symbol

IL36B

 Tel: 1-631-559-9269 1-516-512-3133

 Email: info@creative-biomart.com  Fax: 1-631-938-8127

 45-1 Ramsey Road, Shirley, NY 11967, USA

Synonyms

IL36B; interleukin 36, beta; IL1F8, interleukin 1 family, member 8 (eta); interleukin-36 beta; FIL1; FIL1 (ETA); IL 1F8; IL 1H2; IL1 ETA; IL1H2; MGC126880; MGC126882; FIL1 eta; IL-1 eta; IL-1F8 (FIL1-eta); interleukin-1 eta; interleukin 1, eta; interleukin-1 homolog 2; Interleukin-1 Superfamily e; family of interleukin 1-eta; interleukin-1 family member 8; IL1F8 (Canonical product IL-1F8a); interleukin 1 family, member 8 (eta); FIL1H; IL1F8; IL-1F8; IL-1H2; IL1-ETA; FIL1-(ETA); FIL1-(ETA);

Gene ID

27177

mRNA Refseq

NM_014438

Protein Refseq

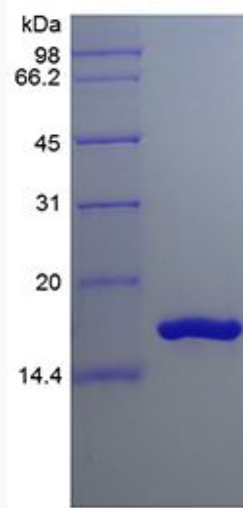
NP_055253

MIM

605508

UniProt ID

Q9NZH7-2

SDS-PAGE of IL36B-508H


 Tel: 1-631-559-9269 1-516-512-3133

 Email: info@creative-biomart.com  Fax: 1-631-938-8127

 45-1 Ramsey Road, Shirley, NY 11967, USA