

Recombinant Human IL36B protein

Cat. No. IL36B-509H Lot. No. (See product label)

SPECIFICATION

Product Overview	Recombinant Human IL36B protein (Interleukin-36 beta, 153a.a.) was expressed in Escherichia coli.
Species	Human
Source	E.coli
ProteinLength	153
Description	<p>Interleukin-36 (IL-36) is a pro-inflammatory cytokine which plays an important role in the pathophysiology of several diseases. IL-36α, IL-36β, and IL-36γ (formerly IL-1F6, IL-1F8, and IL-1F9) are IL-1 family members that signal through the IL-1 receptor family members IL-1Rrp2 (IL-1RL2) and IL-1RAcP. IL-36 beta is reported to be expressed at higher levels in psoriatic plaques than in symptomless psoriatic skin or healthy control skin and it can stimulate production of interleukin-6 and interleukin-8 in synovial fibroblasts, articular chondrocytes and mature adipocytes. It has two isoforms. IL-36β isoform 2 contains one potential N-linked glycosylation site in its C-terminus, while IL-36β isoform 1 lacks potential N-linked glycosylation sites and four of the conserved β-strands. Human IL-36β isoform 2 shares 62 %, 67 %, 63 % and 59 % a.a. identity with the most similar isoform of mouse, canine, bovine and equine IL-36β, respectively.</p>
Form	Lyophilized from a 0.2 μ m filtered concentrated solution in 2 x PBS, pH 7.4.

 Tel: 1-631-559-9269 1-516-512-3133

 Email: info@creative-biomart.com  Fax: 1-631-938-8127

 45-1 Ramsey Road, Shirley, NY 11967, USA

Bio-activity	Fully biologically active when compared to standard. The ED50 as determined by inducing IL-8 secretion in human preadipocytes is less than 10 ng/ml, corresponding to a specific activity of $> 1.0 \times 10^5$ IU/mg.
Molecular Mass	Approximately 17.2 kDa, a single non-glycosylated polypeptide chain containing 153 amino acids.
AA Sequence	REAAPKSYAIRDSRQMVVLSGNSLIAAPLSRSIKPVTLHLIACRDTEFSDKEKGNMV YLGKIGKDLCLFCAEIQGKPTLQLKEKNIMDLVEKKAQKPFLFFHNKEGSTSVFQSV SYPGWFIATSTTSGQPIFLTKERGITNNTNFYLDLSVE
Endotoxin	Less than 1 EU/ μ g of rHuIL-36 β , 153a.a. as determined by LAL method.
Purity	>97% by SDS-PAGE and HPLC analysis.
Storage	Use a manual defrost freezer and avoid repeated freeze-thaw cycles. 12 months from date of receipt, -20 to -70 centigrade as supplied. 1 month, 2 to 8 centigrade under sterile conditions after reconstitution. 3 months, -20 to -70 centigrade under sterile conditions after reconstitution.
Reconstitution	We recommend that this vial be briefly centrifuged prior to opening to bring the contents to the bottom. Reconstitute in sterile distilled water or aqueous buffer containing 0.1 % BSA to a concentration of 0.1-1.0 mg/mL. Stock solutions should be apportioned into working aliquots and stored at ≤ -20 centigrade. Further dilutions should be made in appropriate buffered solutions.

GENE INFORMATION

Gene Name IL36B

Official Symbol IL36B

 Tel: 1-631-559-9269 1-516-512-3133

 Email: info@creative-biomart.com  Fax: 1-631-938-8127

 45-1 Ramsey Road, Shirley, NY 11967, USA

Synonyms

IL36B; interleukin 36, beta; IL1F8, interleukin 1 family, member 8 (eta); interleukin-36 beta; FIL1; FIL1 (ETA); IL 1F8; IL 1H2; IL1 ETA; IL1H2; MGC126880; MGC126882; FIL1 eta; IL-1 eta; IL-1F8 (FIL1-eta); interleukin-1 eta; interleukin 1, eta; interleukin-1 homolog 2; Interleukin-1 Superfamily e; family of interleukin 1-eta; interleukin-1 family member 8; IL1F8 (Canonical product IL-1F8a); interleukin 1 family, member 8 (eta); FIL1H; IL1F8; IL-1F8; IL-1H2; IL1-ETA; FIL1-(ETA); FIL1-(ETA);

Gene ID

27177

mRNA Refseq

NM_014438

Protein Refseq

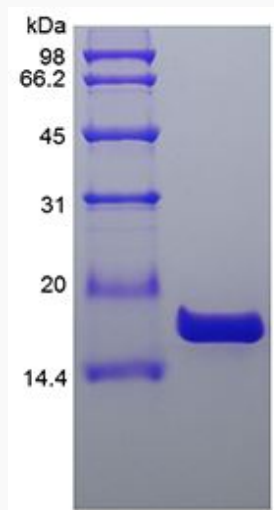
NP_055253

MIM

605508

UniProt ID

Q9NZH7-2

SDS-PAGE of IL36B-509H


 Tel: 1-631-559-9269 1-516-512-3133

 Email: info@creative-biomart.com  Fax: 1-631-938-8127

 45-1 Ramsey Road, Shirley, NY 11967, USA