

Recombinant Human IL36G Protein, His-tagged

Cat. No. IL36G-13H **Lot. No.** (See product label)

SPECIFICATION

Product Overview	Recombinant human IL36B protein (1-169aa), fused to His-tag at N-terminus, was expressed in E. coli and purified by using conventional chromatography techniques.
Species	Human
Source	E.coli
ProteinLength	1-169 a.a.
Description	The protein encoded by this gene is a member of the interleukin 1 cytokine family. The activity of this cytokine is mediated by interleukin 1 receptor-like 2 (IL1RL2/IL1R-rp2), and is specifically inhibited by interleukin 1 family, member 5 (IL1F5/IL-1 delta). Interferon-gamma, tumor necrosis factor-alpha and interleukin 1, beta (IL1B) are reported to stimulate the expression of this cytokine in keratinocytes. The expression of this cytokine in keratinocytes can also be induced by a contact hypersensitivity reaction or herpes simplex virus infection. This gene and eight other interleukin 1 family genes form a cytokine gene cluster on chromosome 2.
Form	Liquid
Molecular Mass	21.1 kDa confirmed by MALDI-TOF
Identity	192aa
AA Sequence	MGSSHHHHHSSGLVPRGSHMGSMRGTPGDADGGGRAVYQSMCKPITGTINDLN

 Tel: 1-631-559-9269 1-516-512-3133

 Email: info@creative-biomart.com  Fax: 1-631-938-8127

 45-1 Ramsey Road, Shirley, NY 11967, USA

QQVWTLQGQNLVAVPRSDSVTPVTVAVITCKYPEALEQGRGDPIYLGIQNPEMCLY
 CEKVGEQPTLQLKEQKIMDLYGQPEPVKPFIFYRAKTGRTSTLESVAFPDWFIASSK
 RDQPIILTSELGKSYNTAFELNIND

Endotoxin < 1 EU/μg of protein (determined by LAL method)

Purity > 95% by SDS-PAGE

Applications SDS-PAGE

Storage Can be stored at 2 to 8 centigrade for 1 week. For long term storage, aliquot and store at -20 to -80 centigrade. Avoid repeated freezing and thawing cycles.

Concentration 1 mg/mL (determined by BCA assay)

Storage Buffer 20mM Tris-HCl buffer (pH 8.0) containing 0.15M NaCl, 10% glycerol

GENE INFORMATION

Gene Name IL36G interleukin 36 gamma [Homo sapiens (human)]

Official Symbol IL36G

Synonyms IL36G; interleukin 36 gamma; IL1E; IL1F9; IL1H1; IL-1F9; IL-1H1; IL1RP2; IL-1RP2; interleukin-36 gamma; IL-1 related protein 2; IL-1-epsilon; interleukin 1-related protein 2; interleukin-1 epsilon; interleukin-1 family member 9; interleukin-1 homolog 1

Gene ID 56300

mRNA Refseq NM_019618

 Tel: 1-631-559-9269 1-516-512-3133

 Email: info@creative-biomart.com  Fax: 1-631-938-8127

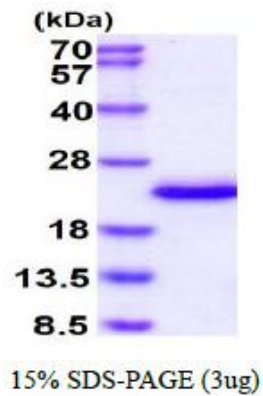
 45-1 Ramsey Road, Shirley, NY 11967, USA

Protein Refseq NP_062564

MIM 605542

UniProt ID Q9NZH8

SDS-PAGE



3 μ g by SDS-PAGE under reducing condition and visualized by coomassie blue stain.

 Tel: 1-631-559-9269 1-516-512-3133

 Email: info@creative-biomart.com  Fax: 1-631-938-8127

 45-1 Ramsey Road, Shirley, NY 11967, USA