

Active Recombinant Human IL36G protein

Cat. No. IL36G-141H Lot. No. (See product label)

SPECIFICATION

Product Overview	Recombinant Human IL36G was expressed in E. coli.
Species	Human
Source	E.coli
Form	Lyophilized from a 0.2 µm filtered solution in Tris and NaCl
Bio-activity	The ED (50) was determined by the dose-dependent proliferation of GieNo3B11 cells and was found to be <0.5ng/mL.
Molecular Mass	18.9 kDa
Endotoxin	<1.0 EU/µg of recombinant protein as determined by the LAL method.
Purity	>95%
Applications	Cell Assay
Storage	The lyophilized protein is stable for at least one year from date of receipt at -70 centigrade. Upon reconstitution, this cytokine can be stored in working aliquots at 2 centigrade - 8 centigrade for one month, or at -20 centigrade for six months, with a carrier protein without detectable loss of activity. Avoid repeated freeze/thaw cycles.
Reconstitution	A quick spin of the vial followed by reconstitution in distilled water to a concentration

 Tel: 1-631-559-9269 1-516-512-3133

 Email: info@creative-biomart.com  Fax: 1-631-938-8127

 45-1 Ramsey Road, Shirley, NY 11967, USA

not less than 0.1 mg/mL. This solution can then be diluted into other buffers.

GENE INFORMATION

Gene Name IL36G interleukin 36, gamma [Homo sapiens]

Official Symbol IL36G

Synonyms IL36G; interleukin 36, gamma; IL1F9, interleukin 1 family, member 9; interleukin-36 gamma; IL 1F9; IL 1H1; IL 1RP2; IL1E; IL1H1; interleukin 1 related protein 2; interleukin 1 epsilon; interleukin 1 homolog 1; IL-1 epsilon; IL-1-epsilon; IL-1(EPSILON); interleukin-1 epsilon; IL-1 related protein 2; IL-1-related protein 2; interleukin-1 homolog 1; interleukin-1 family member 9; interleukin 1 family, member 9; interleukin 1-related protein 2; IL1F9; IL-1F9; IL-1H1; IL1RP2; IL-1RP2;

Gene ID 56300

mRNA Refseq NM_019618

Protein Refseq NP_062564

MIM 605542

UniProt ID Q9NZH8

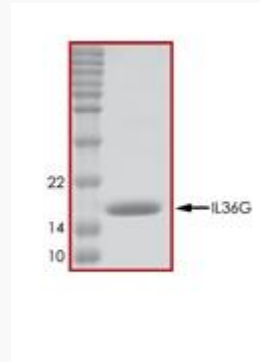
Chromosome Location 2q12-q21

Function cytokine activity; interleukin-1 receptor antagonist activity;

 Tel: 1-631-559-9269 1-516-512-3133

 Email: info@creative-biomart.com  Fax: 1-631-938-8127

 45-1 Ramsey Road, Shirley, NY 11967, USA



Tel: 1-631-559-9269 1-516-512-3133

Email: info@creative-biomart.com Fax: 1-631-938-8127

45-1 Ramsey Road, Shirley, NY 11967, USA