

Recombinant Active Human IL36G Protein, His-tagged(C-ter)

Cat. No. IL36G-198H Lot. No. (See product label)

SPECIFICATION

Product Overview	Recombinant Active Human IL36G Protein with His tag (C-ter) was expressed in E. coli.
Species	Human
Source	E.coli
Description	<p>The protein encoded by this gene is a member of the interleukin 1 cytokine family. The activity of this cytokine is mediated by interleukin 1 receptor-like 2 (IL1RL2/IL1Rrp2), and is specifically inhibited by interleukin 1 family, member 5 (IL1F5/IL-1 delta). Interferon-gamma, tumor necrosis factor-alpha and interleukin 1, beta (IL1B) are reported to stimulate the expression of this cytokine in keratinocytes. The expression of this cytokine in keratinocytes can also be induced by a contact hypersensitivity reaction or herpes simplex virus infection. This gene and eight other interleukin 1 family genes form a cytokine gene cluster on chromosome 2. Two alternatively spliced transcript variants encoding different isoforms have been found for this gene. [provided by RefSeq, Jun 2013]</p>
Form	Powder
Bio-activity	Determined by its ability to induce IL-8 secretion in A431 cells. The ED50 for this effect is < 5 ng/mL.
AA Sequence	MSMCKPITGTINDLNQQVWTLQGQNLVAVPRSDSVTPVTVAVITCKYPEALEQGRG DPIYLGIQNPMECLYCEKVGEQPTLQLKEQKIMDLYGQPEPVKPFIFYRAKTGRTST

 Tel: 1-631-559-9269 1-516-512-3133

 Email: info@creative-biomart.com  Fax: 1-631-938-8127

 45-1 Ramsey Road, Shirley, NY 11967, USA

LESVAFPDWFIASSKRDQPIILTSELGKSYNTAFELNIND

Endotoxin Endotoxin level is less than 0.1 EU/μg of the protein, as determined by the LAL test.

Purity > 98% (by SDS-PAGE)

Applications SDS-PAGE

Notes For laboratory research only, not for drug, diagnostic or other use.

Storage Lyophilized protein should be stored at -20°C. After reconstitution, aliquot and store at -20°C or -80°C for up to one month. Storage in frost free freezers is not recommended. Avoid repeated freeze/thaw cycles. Suggest spin the vial prior to opening.

Storage Buffer PBS (pH 8.0)

Reconstitution It is recommended to reconstitute the lyophilized protein in sterile water to a concentration not less than 100 μg/mL and incubate the stock solution for at least 20 min at room temperature to make sure the protein is dissolved completely.

GENE INFORMATION

Gene Name IL36G interleukin 36, gamma [Homo sapiens]

Official Symbol IL36G

Synonyms IL36G; interleukin 36, gamma; IL1F9, interleukin 1 family, member 9; interleukin-36 gamma; IL 1F9; IL 1H1; IL 1RP2; IL1E; IL1H1; interleukin 1 related protein 2; interleukin 1 epsilon; interleukin 1 homolog 1; IL-1 epsilon; IL-1-epsilon; IL-1(EPSILON); interleukin-1 epsilon; IL-1 related protein 2; IL-1-related protein 2;

 Tel: 1-631-559-9269 1-516-512-3133

 Email: info@creative-biomart.com  Fax: 1-631-938-8127

 45-1 Ramsey Road, Shirley, NY 11967, USA

interleukin-1 homolog 1; interleukin-1 family member 9; interleukin 1 family, member 9; interleukin 1-related protein 2; IL1F9; IL-1F9; IL-1H1; IL1RP2; IL-1RP2;

Gene ID 56300

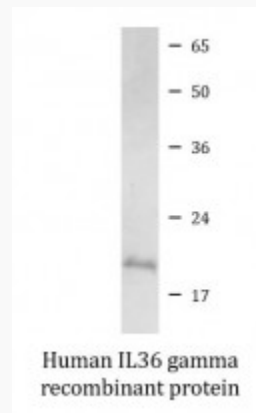
mRNA Refseq NM_019618

Protein Refseq NP_062564

MIM 605542

UniProt ID Q9NZH8

SDS-PAGE



 Tel: 1-631-559-9269 1-516-512-3133

 Email: info@creative-biomart.com  Fax: 1-631-938-8127

 45-1 Ramsey Road, Shirley, NY 11967, USA