

## Active Recombinant Human IL36G Protein (Ser18-Asp169), C-His tagged, Animal-free, Carrier-free

Cat. No. IL36G-256H Lot. No. (See product label)

### SPECIFICATION

<b>Product Overview</b>	Recombinant Human IL36G Protein (Ser18-Asp169) with C-His tag was expressed in E. coli and Animal-free as well as Carrier-free.
<b>Species</b>	Human
<b>Source</b>	E.coli
<b>ProteinLength</b>	Ser18-Asp169
<b>Description</b>	Interleukin-36 gamma (IL-36 $\gamma$ ) consists of 134 amino acids. IL-36 $\gamma$ is a member of the interleukin-1 cytokine family. It plays a significant role in immune responses, particularly in inflammatory reactions, which are essential for binding with interleukin-1 receptor and serves as receptor agonists, enabling cytokine activity and generating pro-inflammatory.
<b>Form</b>	Lyophilized
<b>Bio-activity</b>	Measure by its ability to induce IL-8 secretion in A431 cells. The ED50 for this effect is < 5 ng/mL.
<b>Molecular Mass</b>	The protein has a calculated MW of 17.98 kDa. The protein migrates as 19 kDa under reducing condition (SDS-PAGE analysis).
<b>Endotoxin</b>	< 0.1 EU/ $\mu$ g of the protein by the LAL method.

 Tel: 1-631-559-9269 1-516-512-3133

 Email: [info@creative-biomart.com](mailto:info@creative-biomart.com)  Fax: 1-631-938-8127

 45-1 Ramsey Road, Shirley, NY 11967, USA

<b>Purity</b>	>98% as determined by SDS-PAGE analysis.
<b>Storage</b>	This product is stable after storage at: -20 centigrade for 12 months in lyophilized state from date of receipt. -20 or -80 centigrade for 1 month under sterile conditions after reconstitution. Avoid repeated freeze/thaw cycles.
<b>Storage Buffer</b>	Lyophilized from a 0.2 µm filtered solution of PBS, pH 8.0.
<b>Reconstitution</b>	It is recommended to reconstitute the lyophilized protein in sterile H2O to a concentration not less than 200 µg/mL and incubate the stock solution for at least 20 min to ensure sufficient re-dissolved.
<b>Shipping</b>	The product is shipped with polar packs. Upon receipt, store it immediately at -20 centigrade or lower for long term storage.

## GENE INFORMATION

<b>Gene Name</b>	IL36G interleukin 36, gamma [ Homo sapiens (human) ]
<b>Official Symbol</b>	IL36G
<b>Synonyms</b>	IL36G; interleukin 36, gamma; IL1F9, interleukin 1 family, member 9; interleukin-36 gamma; IL 1F9; IL 1H1; IL 1RP2; IL1E; IL1H1; interleukin 1 related protein 2; interleukin 1 epsilon; interleukin 1 homolog 1; IL-1 epsilon; IL-1-epsilon; IL-1(EPSILON); interleukin-1 epsilon; IL-1 related protein 2; IL-1-related protein 2; interleukin-1 homolog 1; interleukin-1 family member 9; interleukin 1 family, member 9; interleukin 1-related protein 2; IL1F9; IL-1F9; IL-1H1; IL1RP2; IL-1RP2;
<b>Gene ID</b>	56300

 Tel: 1-631-559-9269 1-516-512-3133

 Email: [info@creative-biomart.com](mailto:info@creative-biomart.com)  Fax: 1-631-938-8127

 45-1 Ramsey Road, Shirley, NY 11967, USA

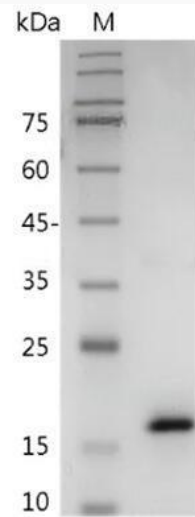
mRNA Refseq [NM\\_019618](#)

Protein Refseq [NP\\_062564](#)

MIM [605542](#)

UniProt ID [Q9NZH8](#)

**SDS-PAGE analysis  
of recombinant  
human IL-36 Gamma.**



 Tel: 1-631-559-9269 1-516-512-3133

 Email: [info@creative-biomart.com](mailto:info@creative-biomart.com)  Fax: 1-631-938-8127

 45-1 Ramsey Road, Shirley, NY 11967, USA