

Active Recombinant Human IL36G protein

Cat. No. IL36G-2584H Lot. No. (See product label)

SPECIFICATION

Product Overview	Recombinant Human IL36 gamma/IL-1F9 Protein is produced by E. coli expression system. The target protein is expressed with sequence (Ser18-Asp169) of human Interleukin-36 gamma (Accession #NP_062564.1).
Species	Human
Source	E.coli
ProteinLength	Ser18-Asp169
Form	Lyophilized from a 0.22 µm filtered solution of PBS, pH 7.4.
Bio-activity	<p>1.The NF-κB (Luc) HEK293 Reporter Cell was stimulated with serial dilutions of human IL-36 gamma protein. After 7 hours, 2.5 ng/mL of human IL-36 gamma can effectively activate the NF-κB signaling.</p> <p>2.Measured by its ability to induce IL-8 secretion in A431 human epithelial carcinoma cells. The ED50 for for this effect is 101.34-405.36 ng/mL.</p>
Molecular Mass	17 kDa
Endotoxin	< 0.1 EU/µg of the protein by LAL method.
Purity	> 92% by SDS-PAGE.
Storage	Store the lyophilized protein at -20°C to -80 °C for long term.

 Tel: 1-631-559-9269 1-516-512-3133

 Email: info@creative-biomart.com  Fax: 1-631-938-8127

 45-1 Ramsey Road, Shirley, NY 11967, USA

After reconstitution, the protein solution is stable at -20 °C for 3 months, at 2-8 °C for up to 1 week.

Reconstitution Reconstitute to a concentration of 0.1-0.5 mg/mL in sterile distilled water.

GENE INFORMATION

Gene Name IL36G interleukin 36, gamma [Homo sapiens]

Official Symbol IL36G

Synonyms

IL36G; interleukin 36, gamma; IL1F9, interleukin 1 family, member 9; interleukin-36 gamma; IL 1F9; IL 1H1; IL 1RP2; IL1E; IL1H1; interleukin 1 related protein 2; interleukin 1 epsilon; interleukin 1 homolog 1; IL-1 epsilon; IL-1-epsilon; IL-1(EPSILON); interleukin-1 epsilon; IL-1 related protein 2; IL-1-related protein 2; interleukin-1 homolog 1; interleukin-1 family member 9; interleukin 1 family, member 9; interleukin 1-related protein 2; IL1F9; IL-1F9; IL-1H1; IL1RP2; IL-1RP2;

Gene ID 56300

mRNA Refseq NM_019618

Protein Refseq NP_062564

MIM 605542

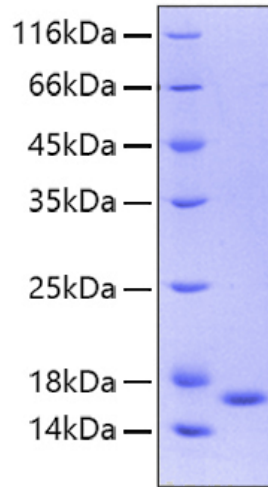
UniProt ID Q9NZH8

 Tel: 1-631-559-9269 1-516-512-3133

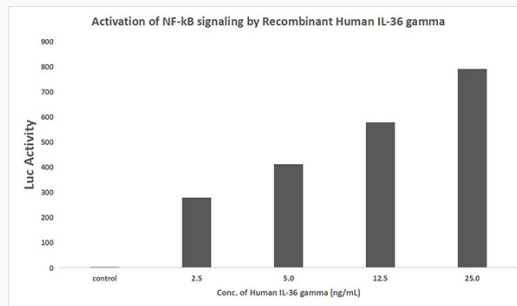
 Email: info@creative-biomart.com  Fax: 1-631-938-8127

 45-1 Ramsey Road, Shirley, NY 11967, USA

SDS-PAGE



Bio-activity



 Tel: 1-631-559-9269 1-516-512-3133

 Email: info@creative-biomart.com  Fax: 1-631-938-8127

 45-1 Ramsey Road, Shirley, NY 11967, USA