

## Recombinant Human IL36G protein

Cat. No. IL36G-510H Lot. No. (See product label)

### SPECIFICATION

**Product Overview** Recombinant Human IL36G protein (Interleukin-36 gamma, 169a.a.) was expressed in Escherichia coli.

**Species** Human

**Source** E.coli

**ProteinLength** 169

**Description** Interleukin-36 (IL-36) is a pro-inflammatory cytokine which plays an important role in the pathophysiology of several diseases. IL-36 $\alpha$ , IL-36 $\beta$ , and IL-36 $\gamma$  (formerly IL-1F6, IL-1F8, and IL-1F9) are IL-1 family members that signal through the IL-1 receptor family members IL-1Rrp2 (IL-1RL2) and IL-1RAcP. IL-36 $\gamma$  is secreted when transfected into 293-T cells and it could constitute part of an independent signaling system analogous to interleukin-1 alpha (IL-1A), beta (IL-1B) receptor agonist and interleukin-1 receptor type I (IL-1R1). Furthermore, IL-36 $\gamma$  also can function as an agonist of NF-kappa B activation through the orphan IL-1-receptor-related protein 2. Recombinant human IL-36 $\gamma$  is synthesized as a 19 kDa, 169 amino acid (a.a.) protein that contains no signal sequence, no prosegment and no potential N-linked glycosylation site. Human to mouse, IL-36 $\gamma$  shares 53 % a.a. identity. Within the family, IL-36 $\gamma$  shares about 25 % ~ 55 % a.a. sequence identity with IL-1RA, IL-1 $\beta$ , IL-36RA, IL-36 $\alpha$ , IL-37, IL-36 $\beta$  and IL-1F10.

**Form** Lyophilized from a 0.2 $\mu$ m filtered concentrated solution in PBS, pH 7.4.

 Tel: 1-631-559-9269 1-516-512-3133

 Email: [info@creative-biomart.com](mailto:info@creative-biomart.com)  Fax: 1-631-938-8127

 45-1 Ramsey Road, Shirley, NY 11967, USA

|                       |   |
|-----------------------|---|
| <b>Bio-activity</b>   | Fully biologically active when compared to standard. The specific activity is determined by its binding ability in a functional ELISA. Immobilized rHuIL-36γ at 1 g/mL can bind recombinant human IL-1 Rrp2 Fc Chimera with a range of 0.15-5 g/mL.   |
| <b>Molecular Mass</b> | Approximately 18.7 kDa, a single non-glycosylated polypeptide chain containing 169 amino acids.   |
| <b>AA Sequence</b>    | MRGTPGDADGGGRAVYQSMCKPITGTINDLNQQVWTLQGGQNLVAVPRSDSVTPVT<br>VAVITCKYPEALEQGRGDPYILGIQNPENCLYCEKVGEPQLQLKEQKIMDLYGQPE<br>PVKPFIFYRAKTGRTSTLESVAFPDWFIASSKRDQPIILTSELGKSYNTAFELNIND   |
| <b>Endotoxin</b>      | Less than 1 EU/μg of rHuIL-36γ, 169a.a. as determined by LAL method.  |
| <b>Purity</b>         | >95% by SDS-PAGE and HPLC analysis.   |
| <b>Storage</b>        | Use a manual defrost freezer and avoid repeated freeze-thaw cycles. 12 months from date of receipt, -20 to -70 centigrade as supplied. 1 month, 2 to 8 centigrade under sterile conditions after reconstitution. 3 months, -20 to -70 centigrade under sterile conditions after reconstitution.   |
| <b>Reconstitution</b> | We recommend that this vial be briefly centrifuged prior to opening to bring the contents to the bottom. Reconstitute in sterile distilled water or aqueous buffer containing 0.1 % BSA to a concentration of 0.1-1.0 mg/mL. Stock solutions should be apportioned into working aliquots and stored at ≤-20 centigrade. Further dilutions should be made in appropriate buffered solutions. |

## GENE INFORMATION

**Gene Name** IL36G

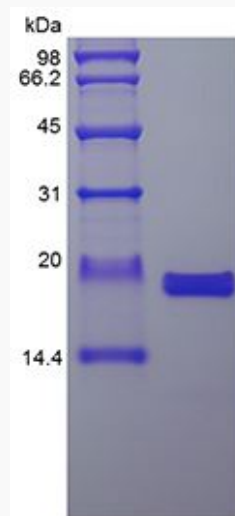
 Tel: 1-631-559-9269 1-516-512-3133

 Email: [info@creative-biomart.com](mailto:info@creative-biomart.com)  Fax: 1-631-938-8127

 45-1 Ramsey Road, Shirley, NY 11967, USA

|                        |  |
|------------------------|--|
| <b>Official Symbol</b> | IL36G  |
| <b>Synonyms</b>        | IL36G; interleukin 36, gamma; IL1F9, interleukin 1 family, member 9; interleukin-36 gamma; IL 1F9; IL 1H1; IL 1RP2; IL1E; IL1H1; interleukin 1 related protein 2; interleukin 1 epsilon; interleukin 1 homolog 1; IL-1 epsilon; IL-1-epsilon; IL-1(EPSILON); interleukin-1 epsilon; IL-1 related protein 2; IL-1-related protein 2; interleukin-1 homolog 1; interleukin-1 family member 9; interleukin 1 family, member 9; interleukin 1-related protein 2; IL1F9; IL-1F9; IL-1H1; IL1RP2; IL-1RP2; |
| <b>Gene ID</b>         | 56300  |
| <b>mRNA Refseq</b>     | NM_019618  |
| <b>Protein Refseq</b>  | NP_062564  |
| <b>MIM</b>             | 605542   |
| <b>UniProt ID</b>      | Q9NZH8   |

**SDS-PAGE of IL36G-510H**



Tel: 1-631-559-9269 1-516-512-3133

Email: [info@creative-biomart.com](mailto:info@creative-biomart.com) Fax: 1-631-938-8127

45-1 Ramsey Road, Shirley, NY 11967, USA