

## Recombinant Human IL36G protein

Cat. No. IL36G-511H Lot. No. (See product label)

### SPECIFICATION

<b>Product Overview</b>	Recombinant Human IL36G protein (Interleukin-36 gamma, 152a.a.) was expressed in Escherichia coli.
<b>Species</b>	Human
<b>Source</b>	E.coli
<b>ProteinLength</b>	152
<b>Description</b>	Interleukin-36 (IL-36) is a pro-inflammatory cytokine which plays an important role in the pathophysiology of several diseases. IL-36 $\alpha$ , IL-36 $\beta$ , and IL-36 $\gamma$ (formerly IL-1F6, IL-1F8, and IL-1F9) are IL-1 family members that signal through the IL-1 receptor family members IL-1Rrp2 (IL-1RL2) and IL-1RAcP. IL-36 $\gamma$ is secreted when transfected into 293-T cells and it could constitute part of an independent signaling system analogous to interleukin-1 alpha (IL-1A), beta (IL-1B) receptor agonist and interleukin-1 receptor type I (IL-1R1). Furthermore, IL-36 $\gamma$ also can function as an agonist of NF-kappa B activation through the orphan IL-1-receptor-related protein 2. Human IL-36 $\gamma$ (152a.a) shares 58 %, 59 %, 68 % and 69 % a.a. sequence identity with mouse, rat, bovine and equine IL-36 $\gamma$ , respectively, and 23 - 57% a.a. sequence identity with other family members.
<b>Form</b>	Lyophilized from a 0.2 $\mu$ m filtered concentrated solution in PBS, pH 7.4.
<b>Bio-activity</b>	Fully biologically active when compared to standard. The ED50 as determined by its

 Tel: 1-631-559-9269 1-516-512-3133

 Email: [info@creative-biomart.com](mailto:info@creative-biomart.com)  Fax: 1-631-938-8127

 45-1 Ramsey Road, Shirley, NY 11967, USA

ability to induce IL-8 secretion by human preadipocytes is less than 10 ng/ml, corresponding to a specific activity of  $> 1 \times 10^5$  IU/mg.

**Molecular Mass**

Approximately 17.0 kDa, a single non-glycosylated polypeptide chain containing 152 amino acids.

**AA Sequence**

SMCKPITGTINDLNQQVWTLQGQNLVAVPRSDSVTPVTVAVITCKYPEALEQGRGD  
PIYLGIQNPEMCLYCEKVGEQPTLQLKEQKIMDLYGQPEPVKPFIFYRAKTGRTSTL  
ESVAFPDWFIASSKRDQPIILTSELGKSYNTAFELNIND

**Endotoxin**

Less than 1 EU/ $\mu$ g of rHuIL-36y, 152a.a. as determined by LAL method.

**Purity**

>95% by SDS-PAGE and HPLC analysis.

**Storage**

Use a manual defrost freezer and avoid repeated freeze-thaw cycles. 12 months from date of receipt, -20 to -70 centigrade as supplied. 1 month, 2 to 8 centigrade under sterile conditions after reconstitution. 3 months, -20 to -70 centigrade under sterile conditions after reconstitution.

**Reconstitution**

We recommend that this vial be briefly centrifuged prior to opening to bring the contents to the bottom. Reconstitute in sterile distilled water or aqueous buffer containing 0.1 % BSA to a concentration of 0.1-1.0 mg/mL. Stock solutions should be apportioned into working aliquots and stored at  $\leq -20$  centigrade. Further dilutions should be made in appropriate buffered solutions.

## GENE INFORMATION

**Gene Name**


IL36G

**Official Symbol**

IL36G

 Tel: 1-631-559-9269 1-516-512-3133

 Email: [info@creative-biomart.com](mailto:info@creative-biomart.com)  Fax: 1-631-938-8127

 45-1 Ramsey Road, Shirley, NY 11967, USA

**Synonyms**

IL36G; interleukin 36, gamma; IL1F9, interleukin 1 family, member 9; interleukin-36 gamma; IL 1F9; IL 1H1; IL 1RP2; IL1E; IL1H1; interleukin 1 related protein 2; interleukin 1 epsilon; interleukin 1 homolog 1; IL-1 epsilon; IL-1-epsilon; IL-1(EPSILON); interleukin-1 epsilon; IL-1 related protein 2; IL-1-related protein 2; interleukin-1 homolog 1; interleukin-1 family member 9; interleukin 1 family, member 9; interleukin 1-related protein 2; IL1F9; IL-1F9; IL-1H1; IL1RP2; IL-1RP2;

**Gene ID**

56300

**mRNA Refseq**

NM\_019618

**Protein Refseq**

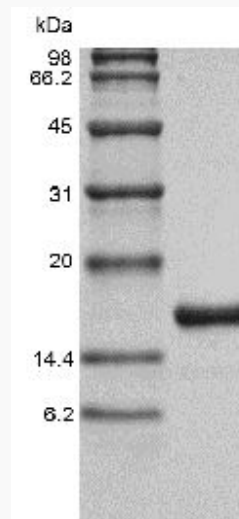
NP\_062564


**MIM**

605542

**UniProt ID**

Q9NZH8

**SDS-PAGE of IL36G-511H**


 Tel: 1-631-559-9269 1-516-512-3133

 Email: [info@creative-biomart.com](mailto:info@creative-biomart.com)  Fax: 1-631-938-8127

 45-1 Ramsey Road, Shirley, NY 11967, USA