

## Recombinant Human IL36G protein

Cat. No. IL36G-754H    Lot. No. (See product label)

### SPECIFICATION

<b>Product Overview</b>	Recombinant Human IL36G protein(NP_062564) (Ser18-Asp169) was expressed and purified in E.coli, with two additional amino acids (Gly & Pro) at the N-terminus.
<b>Species</b>	Human
<b>Source</b>	E.coli
<b>ProteinLength</b>	18-169 aa
<b>Form</b>	Lyophilized from sterile PBS pH 7.4.
<b>Molecular Mass</b>	The recombinant human IL1F9 consists of 154 amino acids and predicts a molecular mass of 17 KDa. It migrates as an approximately 16 KDa band in SDS-PAGE under reducing conditions.
<b>Purity</b>	> 96 % as determined by SDS-PAGE
<b>Storage</b>	Store it under sterile conditions at -20°C to -80°C upon receiving. Recommend to aliquot the protein into smaller quantities for optimal storage. Avoid repeated freeze-thaw cycles.
<b>Reconstitution</b>	It is recommended that sterile water be added to the vial to prepare a stock solution of 0.2 ug/ul. Centrifuge the vial at 4°C before opening to recover the entire contents.

### GENE INFORMATION

 Tel: 1-631-559-9269    1-516-512-3133

 Email: [info@creative-biomart.com](mailto:info@creative-biomart.com)     Fax: 1-631-938-8127

 45-1 Ramsey Road, Shirley, NY 11967, USA

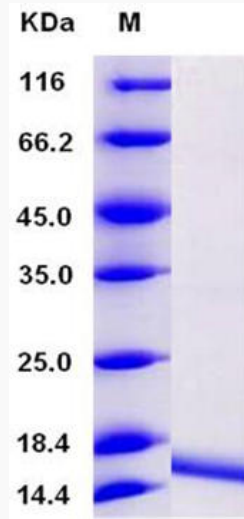
<b>Gene Name</b>	IL36G interleukin 36, gamma [ Homo sapiens ]
<b>Official Symbol</b>	IL36G
<b>Synonyms</b>	IL36G; interleukin 36, gamma; IL1F9, interleukin 1 family, member 9; interleukin-36 gamma; IL 1F9; IL 1H1; IL 1RP2; IL1E; IL1H1; interleukin 1 related protein 2; interleukin 1 epsilon; interleukin 1 homolog 1; IL-1 epsilon; IL-1-epsilon; IL-1(EPSILON); interleukin-1 epsilon; IL-1 related protein 2; IL-1-related protein 2; interleukin-1 homolog 1; interleukin-1 family member 9; interleukin 1 family, member 9; interleukin 1-related protein 2; IL1F9; IL-1F9; IL-1H1; IL1RP2; IL-1RP2;
<b>Gene ID</b>	56300
<b>mRNA Refseq</b>	NM_019618
<b>Protein Refseq</b>	NP_062564
<b>MIM</b>	605542
<b>UniProt ID</b>	Q9NZH8

 Tel: 1-631-559-9269 1-516-512-3133

 Email: [info@creative-biomart.com](mailto:info@creative-biomart.com)  Fax: 1-631-938-8127

 45-1 Ramsey Road, Shirley, NY 11967, USA

**SDS-PAGE**



 Tel: 1-631-559-9269 1-516-512-3133

 Email: [info@creative-biomart.com](mailto:info@creative-biomart.com)  Fax: 1-631-938-8127

 45-1 Ramsey Road, Shirley, NY 11967, USA