

## Recombinant Active Human IL36RN Protein, His-tagged(C-ter)

Cat. No. IL36RN-200H Lot. No. (See product label)

### SPECIFICATION

<b>Product Overview</b>	Recombinant Active Human IL36RN Protein with His tag (C-ter) was expressed in E. coli.
<b>Species</b>	Human
<b>Source</b>	E.coli
<b>Description</b>	The protein encoded by this gene is a member of the interleukin 1 cytokine family. This cytokine was shown to specifically inhibit the activation of NF-kappaB induced by interleukin 1 family, member 6 (IL1F6). This gene and eight other interleukin 1 family genes form a cytokine gene cluster on chromosome 2. Two alternatively spliced transcript variants encoding the same protein have been reported. [provided by RefSeq, Jul 2008]
<b>Form</b>	Powder
<b>Bio-activity</b>	Determined by its ability to inhibit IL-36 gamma-induced IL-8 secretion in PBMC cells. The ED50 for this effect is < 2 ng/mL in the presence of 500 ng/mL of recombinant human IL-36 gamma.
<b>AA Sequence</b>	MVLSGALCFRMKDSALKVLYLHNNQLLAGGLHAGKVIKGEEISVVPNRWLDASLSPV ILGVQGGSQCLSCGVGQEPTLTLEPVNIMELYLGAKESKSFTFYRRDMGLTSSFESA AYPGWFLCTVPEADQPVRLTQLPENGGWNAPITDFYFQQCD
<b>Endotoxin</b>	Endotoxin level is less than 0.1 EU/μg of the protein, as determined by the LAL test.

 Tel: 1-631-559-9269 1-516-512-3133

 Email: [info@creative-biomart.com](mailto:info@creative-biomart.com)  Fax: 1-631-938-8127

 45-1 Ramsey Road, Shirley, NY 11967, USA

<b>Purity</b>	> 98% (by SDS-PAGE)
<b>Applications</b>	SDS-PAGE
<b>Notes</b>	For laboratory research only, not for drug, diagnostic or other use.
<b>Storage</b>	Lyophilized protein should be stored at -20°C. After reconstitution, aliquot and store at -20°C or -80°C for up to one month. Storage in frost free freezers is not recommended. Avoid repeated freeze/thaw cycles. Suggest spin the vial prior to opening.
<b>Storage Buffer</b>	PBS (pH 7.4)
<b>Reconstitution</b>	It is recommended to reconstitute the lyophilized protein in sterile water to a concentration not less than 100 µg/mL and incubate the stock solution for at least 20 min at room temperature to make sure the protein is dissolved completely.

## GENE INFORMATION

<b>Gene Name</b>	IL36RN interleukin 36 receptor antagonist [ <a href="#">Homo sapiens</a> ]
<b>Official Symbol</b>	IL36RN
<b>Synonyms</b>	IL36RN; interleukin 36 receptor antagonist; IL1F5, interleukin 1 family, member 5 (delta); interleukin-36 receptor antagonist protein; family of interleukin 1 delta; FIL1; FIL1(DELTA); FIL1D; IL 1 related protein 3; IL 1F5; IL1HY1; IL1L1; IL1RP3; IL36RA; interleukin 1 HY1; interleukin 1 receptor antagonist homolog 1; MGC29840; IL-1ra homolog 1; interleukin-1 HY1; IL-1 related protein 3; interleukin-1-like protein 1; family of interleukin 1-delta; IL1F5 (Canonical product IL-1F5a); interleukin 1 family, member 5 (delta); interleukin-1 receptor antagonist homolog 1; IL-1F5 (IL-1HY1, FIL1-delta, IL-1RP3, IL-1L1, IL-1-delta); IL1F5; PSORP;

 Tel: 1-631-559-9269 1-516-512-3133

 Email: [info@creative-biomart.com](mailto:info@creative-biomart.com)  Fax: 1-631-938-8127

 45-1 Ramsey Road, Shirley, NY 11967, USA

**Gene ID** 26525

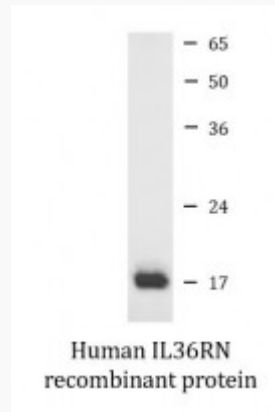
**mRNA Refseq** NM\_012275

**Protein Refseq** NP\_036407

**MIM** 605507

**UniProt ID** Q9UBH0

**SDS-PAGE**



 Tel: 1-631-559-9269 1-516-512-3133

 Email: [info@creative-biomart.com](mailto:info@creative-biomart.com)  Fax: 1-631-938-8127

 45-1 Ramsey Road, Shirley, NY 11967, USA