

Recombinant Human IL36RN Protein (Lys12-Phe151), N-His tagged

Cat. No. IL36RN-3479H **Lot. No.** (See product label)

SPECIFICATION

Product Overview	Recombinant human IL36RN (Lys12-Phe151) protein fused with the N-His tag was expressed in E. coli.
Species	Human
Source	E.coli
ProteinLength	Lys12-Phe151
Molecular Mass	17.59 kDa
Purity	>90 % as determined by SDS-PAGE.
Notes	For research use only.
Storage	Use a manual defrost freezer and avoid repeated freeze thaw cycles. Store at 2 to 8 centigrade for one week. Store at -20 to -80 centigrade for twelve months from the date of receipt.
Storage Buffer	0.01M PBS, pH 7.4, 0.02 % NLS
Reconstitution	Reconstitute in sterile water for a stock solution.
Shipping	In general, proteins are provided as lyophilized powder/frozen liquid. They are

 Tel: 1-631-559-9269 1-516-512-3133

 Email: info@creative-biomart.com  Fax: 1-631-938-8127

 45-1 Ramsey Road, Shirley, NY 11967, USA

shipped out with dry ice/blue ice unless customers require otherwise.

GENE INFORMATION

Gene Name IL36RN interleukin 36 receptor antagonist [Homo sapiens (human)]

Official Symbol IL36RN

Synonyms

IL36RN; interleukin 36 receptor antagonist; IL1F5, interleukin 1 family, member 5 (delta); interleukin-36 receptor antagonist protein; family of interleukin 1 delta; FIL1; FIL1 (DELTA); FIL1D; IL 1 related protein 3; IL 1F5; IL1HY1; IL1L1; IL1RP3; IL36RA; interleukin 1 HY1; interleukin 1 receptor antagonist homolog 1; MGC29840; IL-1ra homolog 1; interleukin-1 HY1; IL-1 related protein 3; interleukin-1-like protein 1; family of interleukin 1-delta; IL1F5 (Canonical product IL-1F5a); interleukin 1 family, member 5 (delta); interleukin-1 receptor antagonist homolog 1; IL-1F5 (IL-1HY1, FIL1-delta, IL-1RP3, IL-1L1, IL-1-delta); IL1F5; PSORP;

Gene ID 26525

mRNA Refseq NM_012275

Protein Refseq NP_036407

MIM 605507

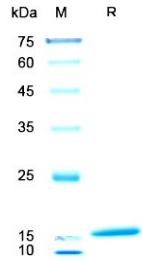
UniProt ID Q9UBH0

 Tel: 1-631-559-9269 1-516-512-3133

 Email: info@creative-biomart.com  Fax: 1-631-938-8127

 45-1 Ramsey Road, Shirley, NY 11967, USA

SDS-PAGE



 Tel: 1-631-559-9269 1-516-512-3133

 Email: info@creative-biomart.com  Fax: 1-631-938-8127

 45-1 Ramsey Road, Shirley, NY 11967, USA