

Recombinant Human IL37 Protein

Cat. No. IL37-108H Lot. No. (See product label)

SPECIFICATION

Product Overview	Recombinant Human Interleukin-37 is produced by our E.coli expression system and the target gene encoding Lys53-Asp218 is expressed.
Species	Human
Source	E.coli
ProteinLength	53-218 a.a.
Description	Human Interleukin family 1 Member 7 (IL1F7) is a member of the Interleukin 1 cytokine family. Five alternatively spliced transcript variants encoding distinct isoforms have been reported with distinct expression profiles. The longest IL1F7 transcript, referred to as IL1F7b or IL1F7 isoform 1, encodes a 218 amino acid residues proprotein containing a 45 amino acid propeptide, which is cleaved to generate mature protein. IL1F7b binds to IL18 R α with low affinity but does not exert any IL18 agonistic or antagonistic effects. IL1F7b also binds interleukin 18 binding protein (IL-18BP), an inhibitory binding protein of interleukin 18 (IL-18), and subsequently forms a complex with IL18 receptor beta subunit, and through which it inhibits the activity of IL-18.
Form	Lyophilized from a 0.2 μ m filtered solution of 20mM PB, 150mM NaCl, 2mM DTT, pH 7.4
Molecular Mass	Predicted Molecular Weight: 18.7kDa Apparent Molecular Weight: 18kDa, reducing conditions.

 Tel: 1-631-559-9269 1-516-512-3133

 Email: info@creative-biomart.com  Fax: 1-631-938-8127

 45-1 Ramsey Road, Shirley, NY 11967, USA

AA Sequence	Lys53-Asp218
Endotoxin	Less than 0.1 ng/ug (1 EU/ug).
Purity	>95%
Storage	<p>Lyophilized protein should be stored at < -20 centigrade, though stable at room temperature for 3 weeks.</p> <p>Reconstituted protein solution can be stored at 4-7 centigrade for 2-7 days.</p> <p>Aliquots of reconstituted samples are stable at < -20 centigrade for 3 months.</p>
Reconstitution	<p>Always centrifuge tubes before opening. Do not mix by vortex or pipetting.</p> <p>It is not recommended to reconstitute to a concentration less than 100µg/ml.</p> <p>Dissolve the lyophilized protein in distilled water.</p> <p>Please aliquot the reconstituted solution to minimize freeze-thaw cycles.</p>
Quality Statement	Purity Greater than 95% as determined by reducing SDS-PAGE.
Shipping	<p>The product is shipped at ambient temperature.</p> <p>Upon receipt, store it immediately at the temperature listed below.</p>

GENE INFORMATION

Gene Name	IL37 interleukin 37 [Homo sapiens (human)]
Official Symbol	IL37
Synonyms	Interleukin-37; FIL1 Zeta; IL-1X; Interleukin-1 Family Member 7; Interleukin-1 Homolog 4; IL-1H; IL-1H4; Interleukin-1 Zeta; IL-1 Zeta; Interleukin-1-Related Protein; IL-1RP1; Interleukin-23; FIL1; FIL1Z; IL-1H; IL-23; IL-37; IL1F7; IL1H4; IL-1F7; IL-1H4; IL1RP1; IL-1RP1; FIL1(ZETA)

 Tel: 1-631-559-9269 1-516-512-3133

 Email: info@creative-biomart.com  Fax: 1-631-938-8127

 45-1 Ramsey Road, Shirley, NY 11967, USA

Gene ID 27178

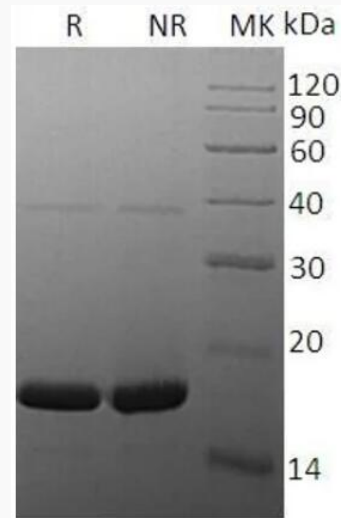
mRNA Refseq NM_014439.4

Protein Refseq NP_055254.2

MIM 605510

UniProt ID Q9NZH6

SDS-PAGE



 Tel: 1-631-559-9269 1-516-512-3133

 Email: info@creative-biomart.com  Fax: 1-631-938-8127

 45-1 Ramsey Road, Shirley, NY 11967, USA