

Recombinant Active Human IL37 Protein, His-tagged(C-ter)

Cat. No. IL37-201H Lot. No. (See product label)

SPECIFICATION

Product Overview	Recombinant Active Human IL37 Protein with His tag (C-ter) was expressed in E. coli.
Species	Human
Source	E.coli
ProteinLength	8-218 aa
Description	<p>The protein encoded by this gene is a member of the interleukin 1 cytokine family. This cytokine can bind to, and may be a ligand for interleukin 18 receptor (IL18R1/IL-1Rrp). This cytokine also binds to interleukin 18 binding protein (IL18BP), an inhibitory binding protein of interleukin 18 (IL18), and subsequently forms a complex with IL18 receptor beta subunit, and through which it inhibits the activity of IL18. This gene along with eight other interleukin 1 family genes form a cytokine gene cluster on chromosome 2. Five alternatively spliced transcript variants encoding distinct isoforms have been reported. [provided by RefSeq, Jul 2008]</p>
Form	Powder
Bio-activity	Determined by its ability to induce IL-8 secretion in human PBMCs. The ED50 for this effect is < 0.9 µg/mL.
AA Sequence	<p>MKLNLPKKFSIHDQDQDHKVLVLD SGNLI AV PDKNYIRPEIFFALASSLSSASAEKGSPIL LGVSKGEFCLYCDKDKGQSHPSLQLKKEKLMKLA AQKESARRPFIFYRAQVGSWN MLESAAHPGWFICTSCNCNEPVGVTDKFENRKHIEFSFQPVCKAEMSPSEVSD</p>

 Tel: 1-631-559-9269 1-516-512-3133

 Email: info@creative-biomart.com  Fax: 1-631-938-8127

 45-1 Ramsey Road, Shirley, NY 11967, USA

Endotoxin	Endotoxin level is less than 0.1 EU/μg of the protein, as determined by the LAL test.
Purity	> 95% (by SDS-PAGE)
Applications	SDS-PAGE
Notes	For laboratory research only, not for drug, diagnostic or other use.
Storage	Lyophilized protein should be stored at -20°C. After reconstitution, aliquot and store at -20°C or -80°C for up to one month. Storage in frost free freezers is not recommended. Avoid repeated freeze/thaw cycles. Suggest spin the vial prior to opening.
Storage Buffer	PBS (pH 8.0)
Reconstitution	It is recommended to reconstitute the lyophilized protein in sterile water to a concentration not less than 100 μg/mL and incubate the stock solution for at least 20 min at room temperature to make sure the protein is dissolved completely.

GENE INFORMATION

Gene Name	IL37 interleukin 37 [Homo sapiens]
Official Symbol	IL37
Synonyms	IL37; interleukin 37; IL1F7, interleukin 1 family, member 7 (zeta); interleukin-37; FIL1; FIL1(ZETA); FIL1Z; IL 1F7; IL 1H4; IL 1RP1; interleukin 1; zeta; interleukin 1 homolog 4; interleukin 1 related protein; FIL1 zeta; IL-1 zeta; IL-1X protein; interleukin-23; interleukin 1, zeta; interleukin-1 homolog 4; interleukin-1 superfamily z; interleukin 1 family member 7; interleukin-1-related protein; IL-1F7b (IL-1H4, IL-1H, IL-1RP1); IL1F7 (canonical product IL-1F7b); IL-1H; IL-37; IL1F7; IL1H4; IL-1F7; IL-1H4;

 Tel: 1-631-559-9269 1-516-512-3133

 Email: info@creative-biomart.com  Fax: 1-631-938-8127

 45-1 Ramsey Road, Shirley, NY 11967, USA

IL1RP1; IL-1RP1;

Gene ID

27178

mRNA Refseq

NM_014439

Protein Refseq


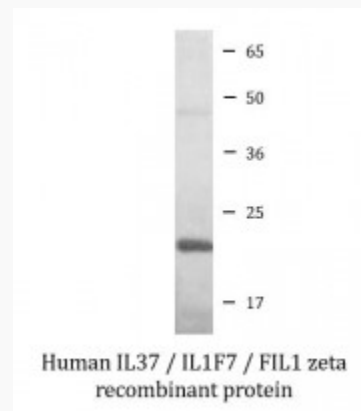
NP_055254

MIM

605510

UniProt ID

Q9NZH6

SDS-PAGE Tel: 1-631-559-9269 1-516-512-3133 Email: info@creative-biomart.com  Fax: 1-631-938-8127 45-1 Ramsey Road, Shirley, NY 11967, USA