

## Recombinant Human IL37 protein

Cat. No. IL37-753H Lot. No. (See product label)

### SPECIFICATION

<b>Product Overview</b>	Recombinant Human IL37 protein(Q9NZH6-2)(Lys27-Asp192) is expressed from E.coli without tag.
<b>Species</b>	Human
<b>Source</b>	E.coli
<b>ProteinLength</b>	27-192 aa
<b>Form</b>	Lyophilized from 0.22µm filtered solution in PBS, 2mM DTT (pH 7.4).
<b>Molecular Mass</b>	The protein has a predicted MW of 18.55 kDa same as Bis-Tris PAGE result.
<b>Endotoxin</b>	Less than 1 EU per µg by the LAL method.
<b>Purity</b>	> 95% as determined by Bis-Tris PAGE > 95% as determined by HPLC
<b>Storage</b>	-20 to -80°C for 12 months as supplied from date of receipt. -80°C for 3 months after reconstitution. Recommend to aliquot the protein into smaller quantities for optimal storage. Please minimize freeze-thaw cycles.
<b>Reconstitution</b>	Dissolve the lyophilized protein in distilled water.

### GENE INFORMATION

 Tel: 1-631-559-9269 1-516-512-3133

 Email: [info@creative-biomart.com](mailto:info@creative-biomart.com)  Fax: 1-631-938-8127

 45-1 Ramsey Road, Shirley, NY 11967, USA

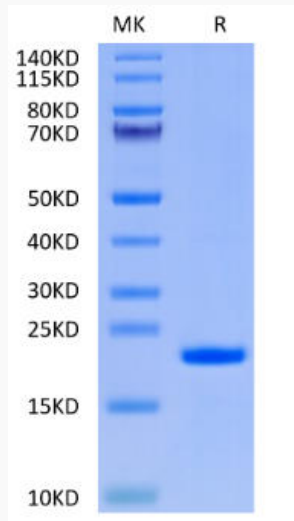
<b>Gene Name</b>	IL37 interleukin 37 [ Homo sapiens ]
<b>Official Symbol</b>	IL37
<b>Synonyms</b>	IL37; interleukin 37; IL1F7, interleukin 1 family, member 7 (zeta); interleukin-37; FIL1; FIL1(ZETA); FIL1Z; IL 1F7; IL 1H4; IL 1RP1; interleukin 1; zeta; interleukin 1 homolog 4; interleukin 1 related protein; FIL1 zeta; IL-1 zeta; IL-1X protein; interleukin-23; interleukin 1, zeta; interleukin-1 homolog 4; interleukin-1 superfamily z; interleukin 1 family member 7; interleukin-1-related protein; IL-1F7b (IL-1H4, IL-1H, IL-1RP1); IL1F7 (canonical product IL-1F7b); IL-1H; IL-37; IL1F7; IL1H4; IL-1F7; IL-1H4; IL1RP1; IL-1RP1;
<b>Gene ID</b>	27178
<b>mRNA Refseq</b>	NM_014439
<b>Protein Refseq</b>	NP_055254
<b>MIM</b>	605510
<b>UniProt ID</b>	Q9NZH6

 Tel: 1-631-559-9269 1-516-512-3133

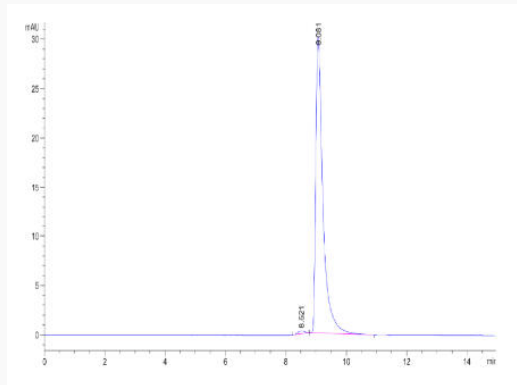
 Email: [info@creative-biomart.com](mailto:info@creative-biomart.com)  Fax: 1-631-938-8127

 45-1 Ramsey Road, Shirley, NY 11967, USA

**Bis-Tris PAGE**



**SEC-HPLC**



 Tel: 1-631-559-9269 1-516-512-3133

 Email: [info@creative-biomart.com](mailto:info@creative-biomart.com)  Fax: 1-631-938-8127

 45-1 Ramsey Road, Shirley, NY 11967, USA