

# Recombinant Full Length Human IL37 Protein, C-Flag-tagged

Cat. No. IL37-949HFL Lot. No. (See product label)

## SPECIFICATION

<b>Product Overview</b>	Recombinant Full Length Human IL37 Protein, fused to Flag-tag at C-terminus, was expressed in Mammalian cells.
<b>Species</b>	Human
<b>Source</b>	Mammalian Cells
<b>Description</b>	The protein encoded by this gene is a member of the interleukin 1 cytokine family. This cytokine can bind to, and may be a ligand for interleukin 18 receptor (IL18R1/IL-1Rrp). This cytokine also binds to interleukin 18 binding protein (IL18BP), an inhibitory binding protein of interleukin 18 (IL18), and subsequently forms a complex with IL18 receptor beta subunit, and through which it inhibits the activity of IL18. This gene along with eight other interleukin 1 family genes form a cytokine gene cluster on chromosome 2. Five alternatively spliced transcript variants encoding distinct isoforms have been reported.
<b>Form</b>	25 mM Tris HCl, pH 7.3, 100 mM glycine, 10% glycerol.
<b>Molecular Mass</b>	23.9 kDa
<b>AA Sequence</b>	MSFVGENSGVKMGSEDWEKDEPQCCELDPAVSPLEPGPSLPAMNFVHTSPKVKNL NPKKFSIHDQDQHKVL VLDSGNLIAVPDKNYIRPEIFFALASSLSSASAEEKGSPILLGVS KGEFCLYCDKDKGQSHPSLQLKKEKL MKLAAQKESARRPFIFYRAQVGSWNMLES AAHPGWFICTSCNCNEPVGVTDKFENRKHIEFSFQPVCKAE MSPSEVSDTRTRPLEQKLISEEDLAANDILDYKDDDDKV

 Tel: 1-631-559-9269 1-516-512-3133

 Email: [info@creative-biomart.com](mailto:info@creative-biomart.com)  Fax: 1-631-938-8127

 45-1 Ramsey Road, Shirley, NY 11967, USA

<b>Purity</b>	> 80% as determined by SDS-PAGE and Coomassie blue staining.
<b>Stability</b>	Stable for 12 months from the date of receipt of the product under proper storage and handling conditions. Avoid repeated freeze-thaw cycles.
<b>Storage</b>	Store at -80 centigrade.
<b>Concentration</b>	>50 ug/mL as determined by microplate BCA method.
<b>Preparation</b>	Recombinant protein was captured through anti-DDK affinity column followed by conventional chromatography steps.
<b>Protein Families</b>	Druggable Genome, Secreted Protein
<b>Full Length</b>	Full L.

## GENE INFORMATION

<b>Gene Name</b>	<a href="#">IL37 interleukin 37 [ Homo sapiens (human) ]</a>
<b>Official Symbol</b>	<a href="#">IL37</a>
<b>Synonyms</b>	FIL1; FIL1Z; IL-1H; IL-23; IL-37; IL1F7; IL1H4; IL-1F7; IL-1H4; IL1RP1; IL-1RP1; FIL1(ZETA)
<b>Gene ID</b>	<a href="#">27178</a>
<b>mRNA Refseq</b>	<a href="#">NM_014439.4</a>
<b>Protein Refseq</b>	<a href="#">NP_055254.2</a>

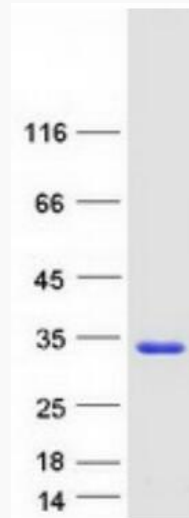
 Tel: 1-631-559-9269 1-516-512-3133

 Email: [info@creative-biomart.com](mailto:info@creative-biomart.com)  Fax: 1-631-938-8127

 45-1 Ramsey Road, Shirley, NY 11967, USA

**MIM** 605510

**UniProt ID** Q9NZH6



Coomassie blue staining of purified IL37 protein.

 Tel: 1-631-559-9269 1-516-512-3133

 Email: [info@creative-biomart.com](mailto:info@creative-biomart.com)  Fax: 1-631-938-8127

 45-1 Ramsey Road, Shirley, NY 11967, USA