

# Recombinant Full Length Human IL3RA Protein, C-Flag-tagged

Cat. No. IL3RA-702HFL Lot. No. (See product label)

## SPECIFICATION

<b>Product Overview</b>	Recombinant Full Length Human IL3RA Protein, fused to Flag-tag at C-terminus, was expressed in Mammalian cells.
<b>Species</b>	Human
<b>Source</b>	Mammalian Cells
<b>Description</b>	The protein encoded by this gene is an interleukin 3 specific subunit of a heterodimeric cytokine receptor. The receptor is comprised of a ligand specific alpha subunit and a signal transducing beta subunit shared by the receptors for interleukin 3 (IL3), colony stimulating factor 2 (CSF2/GM-CSF), and interleukin 5 (IL5). The binding of this protein to IL3 depends on the beta subunit. The beta subunit is activated by the ligand binding, and is required for the biological activities of IL3. This gene and the gene encoding the colony stimulating factor 2 receptor alpha chain (CSF2RA) form a cytokine receptor gene cluster in a X-Y pseudoautosomal region on chromosomes X or Y. Alternatively spliced transcript variants encoding distinct isoforms have been found.
<b>Form</b>	25 mM Tris HCl, pH 7.3, 100 mM glycine, 10% glycerol.
<b>Molecular Mass</b>	41.2 kDa
<b>AA Sequence</b>	MVLLWLTLIIALPCLLQTKEDPNPPITNLRMKAKAQQLTWDLNRNVTDIECVKDADY SMPAVNNSYCQF GAISLCEVTNYTVRVANPPFSTWILFPENSGKPWAGAENLTCWI HDVDFLSCSWAVGPGAPADVQYDLYL NVANRRQQYECLHYKTDAAQGTRIGCRFD

 Tel: 1-631-559-9269 1-516-512-3133

 Email: [info@creative-biomart.com](mailto:info@creative-biomart.com)  Fax: 1-631-938-8127

 45-1 Ramsey Road, Shirley, NY 11967, USA

DISRLSSGSQSSHILVRGRSAAFVIPCTDKFVVFSQIEILTP PNMTAKCNKTHSFMH  
 WKMRSHFNRFKRYELQIQKRMQPVITEQVRDRTSFQLLNPGTYTVQIRARERVYE F  
 LSAWSTPQRFECQEEGANTRAWRTSLIALGTLLALVCVFVICRRYLVMQRLFPRI  
 PHMKDPIGDSFQ  
 NDKLVVWEAGKAGLEECLVTEVQVVQKTRTRTRPLEQKLISEEDLAANDILDYKDDDD  
 KV

<b>Purity</b>	> 80% as determined by SDS-PAGE and Coomassie blue staining.
<b>Stability</b>	Stable for 12 months from the date of receipt of the product under proper storage and handling conditions. Avoid repeated freeze-thaw cycles.
<b>Storage</b>	Store at -80 centigrade.
<b>Concentration</b>	>50 ug/mL as determined by microplate BCA method.
<b>Preparation</b>	Recombinant protein was captured through anti-DDK affinity column followed by conventional chromatography steps.
<b>Protein Families</b>	Transmembrane
<b>Protein Pathways</b>	Apoptosis, Cytokine-cytokine receptor interaction, Hematopoietic cell lineage, Jak-STAT signaling pathway
<b>Full Length</b>	Full L.

## GENE INFORMATION

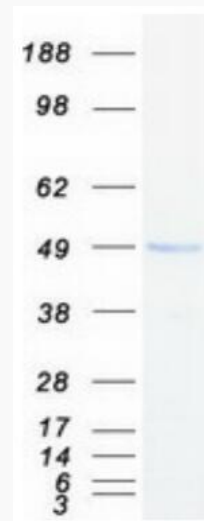
<b>Gene Name</b>	IL3RA interleukin 3 receptor subunit alpha [ Homo sapiens (human) ]
<b>Official Symbol</b>	IL3RA

 Tel: 1-631-559-9269 1-516-512-3133

 Email: [info@creative-biomart.com](mailto:info@creative-biomart.com)  Fax: 1-631-938-8127

 45-1 Ramsey Road, Shirley, NY 11967, USA

<b>Synonyms</b>	IL3R; CD123; IL3RX; IL3RY; IL3RAY; hIL-3Ra
<b>Gene ID</b>	3563
<b>mRNA Refseq</b>	NM_002183.4
<b>Protein Refseq</b>	NP_002174.1
<b>MIM</b>	308385
<b>UniProt ID</b>	P26951



Coomassie blue staining of purified IL3RA protein.

 Tel: 1-631-559-9269 1-516-512-3133

 Email: [info@creative-biomart.com](mailto:info@creative-biomart.com)  Fax: 1-631-938-8127

 45-1 Ramsey Road, Shirley, NY 11967, USA