

## Recombinant Human IL4 protein, His-Avi-tagged

Cat. No. IL4-202H Lot. No. (See product label)

### SPECIFICATION

<b>Product Overview</b>	Recombinant Human IL4 protein(P05112)(His25-Ser153), fused with C-terminal His and Avi tag, was expressed in HEK293.
<b>Species</b>	Human
<b>Source</b>	HEK293
<b>ProteinLength</b>	His25-Ser153
<b>Tag</b>	C-His-Avi
<b>Form</b>	Lyophilized from 0.22µm filtered solution in PBS (pH 7.4). Normally 5% trehalose is added as protectant before lyophilization.
<b>Bio-activity</b>	Immobilized Human IL-4 at 1 ug/ml (100 ul/well) on the plate. Dose response curve for Human IL-4 R alpha, hFc Tag with the EC50 of 4.2 ng/ml determined by ELISA.
<b>Molecular Mass</b>	The protein has a predicted MW of 17.8 kDa. Due to glycosylation, the protein migrates to 23-25 kDa based on Tris-Bis PAGE result.
<b>Endotoxin</b>	Less than 1EU per µg by the LAL method.
<b>Purity</b>	> 95% as determined by Tris-Bis PAGE
<b>Storage</b>	Reconstituted protein stable at -80°C for 12 months, 4°C for 1 week. Use a manual

 Tel: 1-631-559-9269 1-516-512-3133

 Email: [info@creative-biomart.com](mailto:info@creative-biomart.com)  Fax: 1-631-938-8127

 45-1 Ramsey Road, Shirley, NY 11967, USA

defrost freezer and avoid repeated freeze-thaw cycles.

**Reconstitution**

Centrifuge tubes before opening. Reconstituting to a concentration more than 100 µg/ml is recommended. Dissolve the lyophilized protein in distilled water.

## GENE INFORMATION

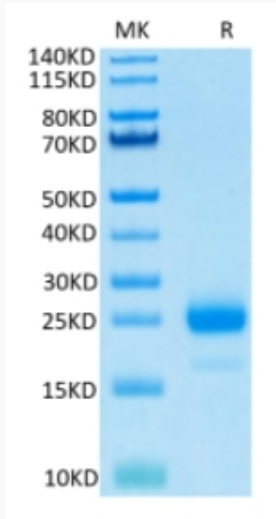
<b>Gene Name</b>	IL4 interleukin 4 [ Homo sapiens ]
<b>Official Symbol</b>	IL4
<b>Synonyms</b>	IL4; interleukin 4; interleukin-4; B cell growth factor 1; B_cell stimulatory factor 1; BCGF 1; BCGF1; BSF1; IL 4; lymphocyte stimulatory factor 1; MGC79402; binetrakin; pitrakinra; IL-4; BSF-1; BCGF-1;
<b>Gene ID</b>	3565
<b>mRNA Refseq</b>	NM_000589
<b>Protein Refseq</b>	NP_000580
<b>MIM</b>	147780
<b>UniProt ID</b>	P05112

 Tel: 1-631-559-9269 1-516-512-3133

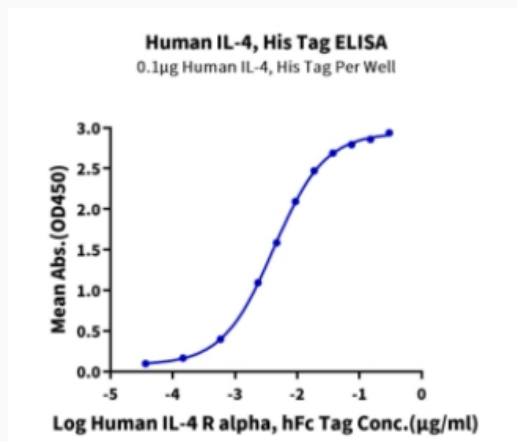
 Email: [info@creative-biomart.com](mailto:info@creative-biomart.com)  Fax: 1-631-938-8127

 45-1 Ramsey Road, Shirley, NY 11967, USA

**Tris-Bis PAGE**



**ELISA Data**



 Tel: 1-631-559-9269 1-516-512-3133

 Email: [info@creative-biomart.com](mailto:info@creative-biomart.com)  Fax: 1-631-938-8127

 45-1 Ramsey Road, Shirley, NY 11967, USA