

## Active Recombinant Bovine Interleukin 4

Cat. No. IL4-240B Lot. No. (See product label)

### SPECIFICATION

<b>Product Overview</b>	Recombinant Bovine IL-4 was expressed in Yeast. MW= 12.6 kDa (112 aa).
<b>Species</b>	Bovine
<b>Source</b>	Yeast
<b>Description</b>	Interleukin-4, abbreviated IL-4, is a cytokine that induces differentiation of naive helper T cells (Th0 cells) to Th2 cells. Upon activation by IL-4, Th2 cells subsequently produce additional IL-4. The cell that initially produces IL-4, thus inducing Th0 differentiation, has not been identified, but recent studies suggest that basophils may be the effector cell. Its receptor is the Interleukin-4 receptor.
<b>Formulation/ Reconstitution</b>	Lyophilized. Reconstitute with sterile phosphate-buffered saline containing at least 0.1% carrier protein.
<b>Purification</b>	Ion-exchange chromatography.
<b>Purity</b>	>95% as visualized by SDS-PAGE analysis.
<b>Amino Acid Sequence</b>	GHKCDITLAE IIKTLNILTT RKNSCMELPV ADVFAAPKNT TEKETFRCRVG IELRRIYRSH TCLNKFLGGL DRNLNSLASK TCSVNEAKTS TSTLKDLLER LKTIMKEKYS KC.
<b>Bioactivity</b>	The biological activity of recombinant bovine IL-4 was measured in a cell proliferation assay using the human TF-1 cell line. The ED50 for this effect is typically 1.5 - 2

 Tel: 1-631-559-9269 1-516-512-3133

 Email: [info@creative-biomart.com](mailto:info@creative-biomart.com)  Fax: 1-631-938-8127

 45-1 Ramsey Road, Shirley, NY 11967, USA

ng/mL.

**Stability And Storage**

Stable for up to twelve months from date of receipt at -20°C. Stable for at least 3 months when stored in working aliquots with a carrier protein at -20°C. Avoid repeated freeze/thaw cycles.

## GENE INFORMATION

**Gene Name**

IL4 interleukin 4 [ Bos taurus ]

**Synonyms**

interleukin 4; IL4; IL-4; interleukin-4; BSF-1; B-cell stimulatory factor 1; lymphocyte stimulatory factor 1

**Gene ID**

280824

**mRNA Refseq**

NM\_173921.2

**Protein Refseq**

NP\_776346.1

**UniProt ID**

P30367

**Chromosome Location**

7q15-q21

**Pathway**

Allotraft rejection; Asthma; Autoimmune thyroid disease; Cytokine-cytokine receptor interaction; Fc epsilon RI signaling pathway; Hematopoietic cell lineage; Intestinal immune network for IgA production; Jak-STAT signaling pathway; T cell receptor signaling pathway

**Function**

cytokine activity; growth factor activity; interleukin-4 receptor binding; protein binding

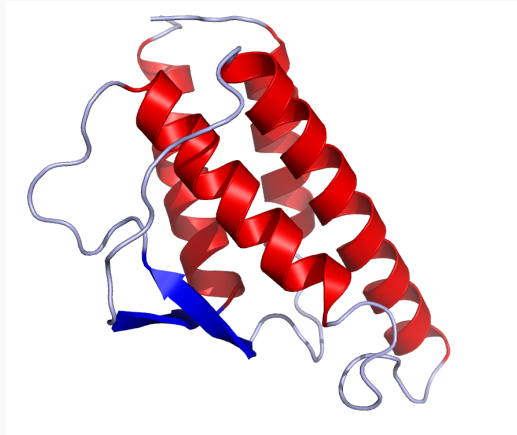
 Tel: 1-631-559-9269 1-516-512-3133

 Email: [info@creative-biomart.com](mailto:info@creative-biomart.com)  Fax: 1-631-938-8127

 45-1 Ramsey Road, Shirley, NY 11967, USA



**Crystal structure of  
human IL-4 (2INT).**



☎ Tel: 1-631-559-9269 1-516-512-3133

☎ Email: [info@creative-biomart.com](mailto:info@creative-biomart.com) ☎ Fax: 1-631-938-8127

☎ 45-1 Ramsey Road, Shirley, NY 11967, USA