

Recombinant Bovine Interleukin 4

Cat. No. IL4-593B Lot. No. (See product label)

SPECIFICATION

Product Overview	Recombinant Bovine IL4 was expressed in COS-7 cells.
Species	Bovine
Source	COS-7 cells
Description	PBP010 may be used as a standard in ELISA assays to determine bovine IL4 levels. This product demonstrates functional activity in activation assays utilizing bovine B lymphocytes, although a formal ED50 value has not been determined.
Form	Tissue Culture Supernatant from COS-7 cells expressing recombinant bovine IL4 - lyophilized.
Application	ELISA
Storage	Prior to reconstitution store at +4°C. After reconstitution store at +4°C or at -20°C if preferred. This product should be stored undiluted. Avoid repeated freezing and thawing as this may denature the protein. Should this product contain a precipitate we recommend microcentrifugation before use.

GENE INFORMATION

Gene Name	IL4 interleukin 4 [Bostaurus]
Official Symbol	IL4

 Tel: 1-631-559-9269 1-516-512-3133

 Email: info@creative-biomart.com  Fax: 1-631-938-8127

 45-1 Ramsey Road, Shirley, NY 11967, USA

Synonyms	IL4; interleukin 4; IL-4; BSF-1; interleukin-4; B-cell stimulatory factor 1; lymphocystestimulatory factor 1
Gene ID	280824
mRNA Refseq	NM_173921
Protein Refseq	NP_776346
UniProt ID	P30367
Chromosome Location	7q15-21
Pathway	Allograftrejection; Asthma; Autoimmune thyroid disease; Cytokine-cytokine receptorinteraction; Cytokines and Inflammatory Response (BioCarta); Fc epsilon R1signaling pathway; Hematopoietic cell lineage; Intestinal immune network forIgA production; Jak-STAT signaling pathway; Leishmaniasis; Measles; T cellreceptor signaling pathway
Function	cytokineactivity; growth factor activity; interleukin-4 receptor binding

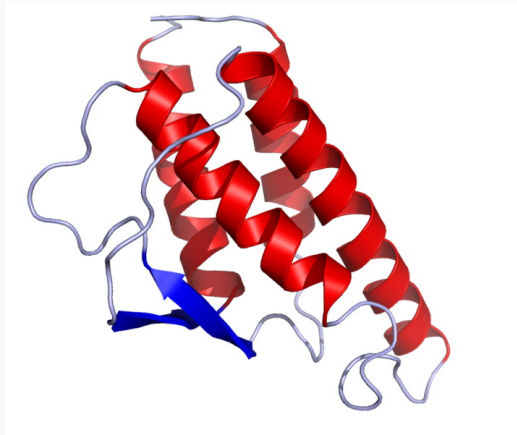
 Tel: 1-631-559-9269 1-516-512-3133

 Email: info@creative-biomart.com  Fax: 1-631-938-8127

 45-1 Ramsey Road, Shirley, NY 11967, USA



**Crystal structure of
human IL-4 (2INT)**



☎ Tel: 1-631-559-9269 1-516-512-3133

☎ Email: info@creative-biomart.com ☎ Fax: 1-631-938-8127

☎ 45-1 Ramsey Road, Shirley, NY 11967, USA