

Recombinant Chicken IL4 protein, His & T7-tagged

Cat. No. IL4-645C Lot. No. (See product label)

SPECIFICATION

Product Overview	Recombinant Chicken IL4 aa. (Leu26~Lys136 (Accession# Q5W4U1)) fused with N-terminal His & T7 tag was produced in E. coli cells.
Species	Chicken
Source	E.coli
ProteinLength	Leu26~Lys136
Form	Freeze-dried powder
Molecular Mass	Predicted Molecular Mass: 16.2kDa
Endotoxin	<1.0EU per 1g (determined by the LAL method)
Purity	>95%
Characteristic	The isoelectric point is 9.1.
Applications	SDS-PAGE; WB; ELISA; IP; CoIP; Purification; Amine Reactive Labeling.
Stability	The thermal stability is described by the loss rate. The loss rate was determined by accelerated thermal degradation test, that is, incubate the protein at 37°C for 48h, and no obvious degradation and precipitation were observed. The loss rate is less than 5% within the expiration date under appropriate storage condition.

 Tel: 1-631-559-9269 1-516-512-3133

 Email: info@creative-biomart.com  Fax: 1-631-938-8127

 45-1 Ramsey Road, Shirley, NY 11967, USA

Storage	Avoid repeated freeze/thaw cycles. Store at 2-8°C for one month. Aliquot and store at -80°C for 12 months.
----------------	--

Storage buffer	Supplied as lyophilized form in 20mM Tris, 150mM NaCl, pH8.0, containing 1mM EDTA, 1mM DTT, 0.01% sarcosyl, 5% trehalose, and preservative
-----------------------	--

Reconstitution	Reconstitute in sterile ddH ₂ O.
-----------------------	---

GENE INFORMATION

Gene Name	IL4 interleukin 4 [Gallus gallus (chicken)]
------------------	---

Official Symbol	IL4
------------------------	-----

Synonyms	interleukin-4
-----------------	---------------

Gene ID	416330
----------------	--------

mRNA Refseq	NM_001007079.1
--------------------	----------------

Protein Refseq	NP_001007080.1
-----------------------	----------------

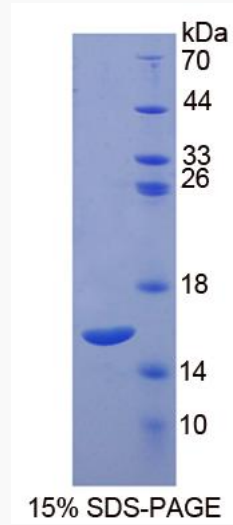
UniProt ID	Q5W4U1
-------------------	--------

 Tel: 1-631-559-9269 1-516-512-3133

 Email: info@creative-biomart.com  Fax: 1-631-938-8127

 45-1 Ramsey Road, Shirley, NY 11967, USA

SDS-PAGE



 Tel: 1-631-559-9269 1-516-512-3133

 Email: info@creative-biomart.com  Fax: 1-631-938-8127

 45-1 Ramsey Road, Shirley, NY 11967, USA