

# Recombinant Full Length Human IL4I1 Protein, C-Flag-tagged

**Cat. No.** IL4I1-1563HFL    **Lot. No.** (See product label)

## SPECIFICATION

<b>Product Overview</b>	Recombinant Full Length Human IL4I1 Protein, fused to Flag-tag at C-terminus, was expressed in Mammalian cells.
<b>Species</b>	Human
<b>Source</b>	Mammalian Cells
<b>Description</b>	This gene encodes a secreted L-amino acid oxidase protein which primarily catabolizes L-phenylalanine and, to a lesser extent, L-arginine. The expression of this gene is induced by the cytokine interleukin 4 in B cells. This gene is also expressed in macrophages and dendritic cells. This protein may play a role immune system escape as it is expressed in tumor-associated macrophages and suppresses T-cell responses. This protein also contains domains thought to be involved in the binding of flavin adenine dinucleotide (FAD) cofactor. Multiple transcript variants encoding different isoforms have been found for this gene. Some transcripts of this gene share a promoter and exons of the 5' UTR with the overlapping NUP62 gene.
<b>Form</b>	25 mM Tris HCl, pH 7.3, 100 mM glycine, 10% glycerol.
<b>Molecular Mass</b>	65.1 kDa
<b>AA Sequence</b>	MPNDDFCPGLTIKAMGAERAPQRQPCTLHLLVLPILLSLVASQDWKAERSQDPFEK CMQDPDYEQLLKV VTWGLNRTLKPKQRVIVVGAGVAGLVAAKVLSDAGHKVTILEAD NRIGGRIFTYRDQNMGWIGELGAMRMP SSHRILHKLCQGLGLNLTKFTQYDKNTWT EVHEVKLRNYVVEKVPKLGALRPQEKGHSPEDIYQMALN QALKDLKALGCRKAM

 Tel: 1-631-559-9269    1-516-512-3133

 Email: [info@creative-biomart.com](mailto:info@creative-biomart.com)     Fax: 1-631-938-8127

 45-1 Ramsey Road, Shirley, NY 11967, USA

KKFERHTLLEYLLGEGNLSRPAVQLLGDVMSSEGGFFYLSFAEALRAHSCLSDRLQ Y  
 SRIVGGWDLPRALLSSLSGLVLLNAPVVAMTQGPHDVHVQIETSPARNLKVLDKAD  
 VVLLTASGPAVK RITFSPPLPRHMQEALRRLHYVPATKVFLSFRRPFWREEHIEGGH  
 SNTDRPSRMIFYPPPREGALLASY TWSDAAAAFAGLSREEALRLALDDVAALHGP  
 VVRQLWDGTGVVVKRWAEDQHSQGGFVVQPPALWQTEKDD WTVPYGRIYFAGEH  
 TAYPHGWVETAVKSALRAAIKINSRKGPSDASPEGHASDMEGQGHVHGVASSPS  
 HDLAKEEGSHPPVQGQLSLQNTTHTRTSHTRTRPLEQKLISEEDLAANDILDYKDDD  
 DKV

<b>Purity</b>	> 80% as determined by SDS-PAGE and Coomassie blue staining.
<b>Stability</b>	Stable for 12 months from the date of receipt of the product under proper storage and handling conditions. Avoid repeated freeze-thaw cycles.
<b>Storage</b>	Store at -80 centigrade.
<b>Concentration</b>	>50 ug/mL as determined by microplate BCA method.
<b>Preparation</b>	Recombinant protein was captured through anti-DDK affinity column followed by conventional chromatography steps.
<b>Protein Families</b>	Druggable Genome
<b>Protein Pathways</b>	Alanine, aspartate and glutamate metabolism, Cysteine and methionine metabolism, Metabolic pathways, Phenylalanine, tyrosine and tryptophan biosynthesis, Phenylalanine metabolism, Tryptophan metabolism, Tyrosine metabolism, Valine, leucine and isoleucine degradation
<b>Full Length</b>	Full L.

 Tel: 1-631-559-9269 1-516-512-3133

 Email: [info@creative-biomart.com](mailto:info@creative-biomart.com)  Fax: 1-631-938-8127

 45-1 Ramsey Road, Shirley, NY 11967, USA

## GENE INFORMATION

**Gene Name** IL4I1 interleukin 4 induced 1 [ Homo sapiens (human) ]

**Official Symbol** IL4I1

**Synonyms** LAO; FIG1; LAAO; hIL4I1

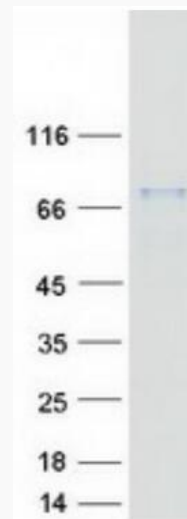
**Gene ID** 259307

**mRNA Refseq** NM\_172374.3

**Protein Refseq** NP\_758962.1

**MIM** 609742

**UniProt ID** Q96RQ9



 Tel: 1-631-559-9269 1-516-512-3133

 Email: [info@creative-biomart.com](mailto:info@creative-biomart.com)  Fax: 1-631-938-8127

 45-1 Ramsey Road, Shirley, NY 11967, USA



Coomassie blue staining of purified IL411 protein.

 Tel: 1-631-559-9269 1-516-512-3133

 Email: [info@creative-biomart.com](mailto:info@creative-biomart.com)  Fax: 1-631-938-8127

 45-1 Ramsey Road, Shirley, NY 11967, USA