

Recombinant Human Interleukin 4 Receptor

Cat. No. IL4R-1645H Lot. No. (See product label)

SPECIFICATION

Species	Human
Source	Mammalian Cells
Description	Human IL-4 exerts its biological effects via signaling through its receptor system, IL-4R. There are two types of the IL-4 receptor complexes, the type I receptor consisting of the IL-4R alpha and the common gamma chain, γc and the type II receptor consisting of IL-4R alpha and the IL-13R alpha. The IL-4R alpha chain contains an extracellular domain of 207 amino acids, a transmembrane domain of 24 amino acids, and an intracellular domain of 569 amino acids.
State Of Matter	Lyophilized.
Purity	>95% by SDS Page and analyzed by silver stain.
Endotoxin	<0.1 ng per 1 g as determined by the LAL method.
Molecular Weight	The predicted molecular weight of Recombinant Human IL-4 R is Mr 50.5 kDa. However, the actual molecular weight as observed by migration on SDS Page is Mr 75-85 kDa.
Storage And Stability	This lyophilized protein is stable for six to twelve months when stored desiccated at -20°C to -70°C. After aseptic reconstitution, this protein may be stored at 2°C to 8°C for one month or at -20°C to -70°C in a manual defrost freezer. Avoid Repeated Freeze Thaw Cycles.

 Tel: 1-631-559-9269 1-516-512-3133

 Email: info@creative-biomart.com  Fax: 1-631-938-8127

 45-1 Ramsey Road, Shirley, NY 11967, USA

GENE INFORMATION

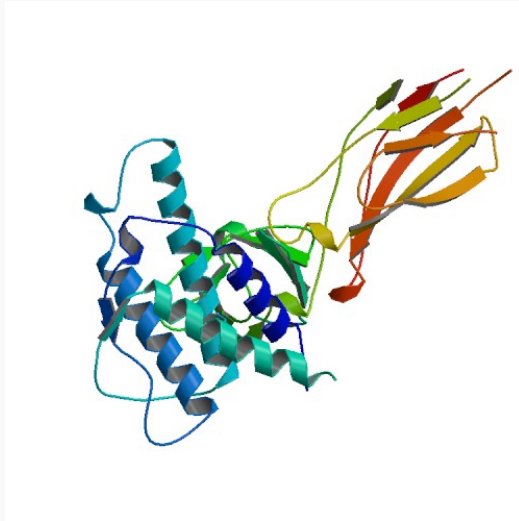
Gene Name	IL4R interleukin 4 receptor [Homo sapiens]
Synonyms	IL4R; interleukin 4 receptor; CD124; IL4RA; interleukin 4 receptor alpha chain; OTTHUMP00000122506; interleukin-4 receptor alpha chain; CD_antigen; IL-4R-alpha; Soluble interleukin-4 receptor alpha chain; sIL4Ralpha/prot; IL-4-binding protein; IL4-BP
Gene ID	3566
mRNA Refseq	NM_000418
Protein Refseq	NP_000409
MIM	147781
UniProt ID	P24394
Chromosome Location	16p12.1-p11.2
Pathway	Cytokine-cytokine receptor interaction; Endocytosis; Hematopoietic cell lineage; Jak-STAT signaling pathway
Function	interleukin-4 receptor activity; receptor activity; protein binding; receptor signaling protein activity

 Tel: 1-631-559-9269 1-516-512-3133

 Email: info@creative-biomart.com  Fax: 1-631-938-8127

 45-1 Ramsey Road, Shirley, NY 11967, USA

PDB rendering based
on 1iar.



 Tel: 1-631-559-9269 1-516-512-3133

 Email: info@creative-biomart.com  Fax: 1-631-938-8127

 45-1 Ramsey Road, Shirley, NY 11967, USA