

Recombinant Human IL4R protein, hFc-tagged

Cat. No. IL4R-390H Lot. No. (See product label)

SPECIFICATION

Product Overview	Recombinant Human IL4R protein(P24394-1)(Gly24-His232), fused with C-terminal hFc tag, was expressed in HEK293.
Species	Human
Source	HEK293
ProteinLength	Gly24-His232
Tag	C-hFc
Form	Lyophilized from 0.22µm filtered solution in PBS (pH 7.4). Normally 5% trehalose is added as protectant before lyophilization.
Bio-activity	Immobilized Human IL-4, No Tag at 1 µg/ml (100 ul/well) on the plate. Dose response curve for Human IL-4 R alpha, hFc Tag with the EC50 of 5.5 ng/ml determined by ELISA.
Molecular Mass	The protein has a predicted MW of 50.7 kDa. Due to glycosylation, the protein migrates to 70-80 kDa based on Tris-Bis PAGE result.
Endotoxin	Less than 1EU per µg by the LAL method.
Purity	> 95% as determined by Tris-Bis PAGE;> 95% as determined by HPLC

 Tel: 1-631-559-9269 1-516-512-3133

 Email: info@creative-biomart.com  Fax: 1-631-938-8127

 45-1 Ramsey Road, Shirley, NY 11967, USA

Storage Reconstituted protein stable at -80°C for 12 months, 4°C for 1 week. Use a manual defrost freezer and avoid repeated freeze-thaw cycles.

Reconstitution Centrifuge tubes before opening. Reconstituting to a concentration more than 100 µg/ml is recommended. Dissolve the lyophilized protein in distilled water.

GENE INFORMATION

Gene Name IL4R interleukin 4 receptor [[Homo sapiens](#)]

Official Symbol IL4R

Synonyms IL4R; interleukin 4 receptor; interleukin-4 receptor subunit alpha; CD124; IL-4 receptor subunit alpha; interleukin-4 receptor alpha chain; IL4RA; IL-4RA;

Gene ID 3566

mRNA Refseq NM_000418

Protein Refseq NP_000409

MIM 147781

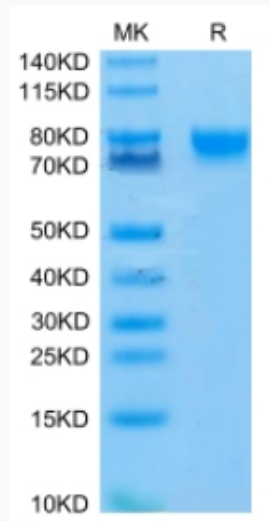
UniProt ID P24394

 Tel: 1-631-559-9269 1-516-512-3133

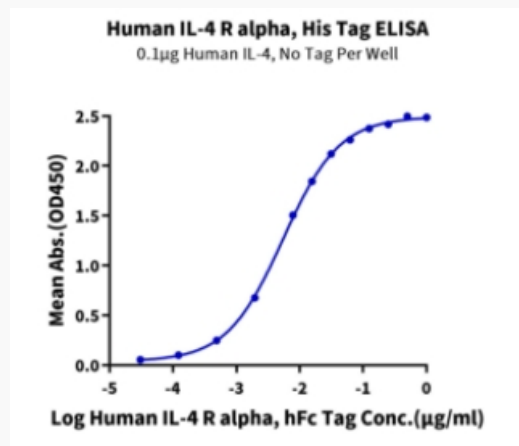
 Email: info@creative-biomart.com  Fax: 1-631-938-8127

 45-1 Ramsey Road, Shirley, NY 11967, USA

Tris-Bis PAGE



ELISA Data



 Tel: 1-631-559-9269 1-516-512-3133

 Email: info@creative-biomart.com  Fax: 1-631-938-8127

 45-1 Ramsey Road, Shirley, NY 11967, USA