

Recombinant Human IL4R protein, His-tagged

Cat. No. IL4R-5655H Lot. No. (See product label)

SPECIFICATION

Product Overview	Recombinant Human IL4R protein(P24394)(24-232aa), fused with N-terminal His tag, was expressed in E.coli.
Species	Human
Source	E.coli
ProteinLength	24-232aa
Form	If the delivery form is liquid, the default storage buffer is Tris/PBS-based buffer, 5%-50% glycerol. If the delivery form is lyophilized powder, the buffer before lyophilization is Tris/PBS-based buffer, 6% Trehalose, pH 8.0.
Molecular Mass	29.9 kDa
Purity	Greater than 90% as determined by SDS-PAGE.
Storage	Store at -20°C/-80°C upon receipt, aliquoting is necessary for mutiple use. Avoid repeated freeze-thaw cycles.
Reconstitution	We recommend that this vial be briefly centrifuged prior to opening to bring the contents to the bottom. Please reconstitute protein in deionized sterile water to a concentration of 0.1-1.0 mg/mL. We recommend to add 5-50% of glycerol (final concentration) and aliquot for long-term storage at -20°C/-80°C.

 Tel: 1-631-559-9269 1-516-512-3133

 Email: info@creative-biomart.com  Fax: 1-631-938-8127

 45-1 Ramsey Road, Shirley, NY 11967, USA

AA Sequence

GNMKVLQEPTCVSDYMSISTCEWKMNGPTNCSTELRLLYQLVFLLEAHTCIPENN
GGAGCVCHLLMDDVVSADNYTLDLWAGQQLLWKGSFKPSEHVKPRAPGNLTVHTN
VSDTLLL TWSNPYPDPNYLYNHLTYAVNIWSENDPADFRIYNVTYLEPSLRIAASTLK
SGISYRARVRAWAQCYNNTTWSEWSPSTKWHNSYREPFEQH

GENE INFORMATION

Gene Name IL4R interleukin 4 receptor [Homo sapiens]

Official Symbol IL4R

Synonyms IL4R; interleukin 4 receptor; interleukin-4 receptor subunit alpha; CD124; IL-4 receptor subunit alpha; interleukin-4 receptor alpha chain; IL4RA; IL-4RA;

Gene ID 3566

mRNA Refseq NM_000418

Protein Refseq NP_000409

MIM 147781

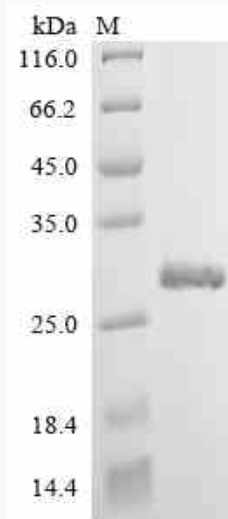
UniProt ID P24394

 Tel: 1-631-559-9269 1-516-512-3133

 Email: info@creative-biomart.com  Fax: 1-631-938-8127

 45-1 Ramsey Road, Shirley, NY 11967, USA

SDS-PAGE



 Tel: 1-631-559-9269 1-516-512-3133

 Email: info@creative-biomart.com  Fax: 1-631-938-8127

 45-1 Ramsey Road, Shirley, NY 11967, USA