

Active Recombinant Dog IL5 Protein, His-tagged

Cat. No. IL5-003D Lot. No. (See product label)

SPECIFICATION

Product Overview	Recombinant canine IL-5, fused to His-tag at C-terminus, was expressed in insect cell and purified by using conventional chromatography techniques.
Species	Dog
Source	Insect cells
Description	Factor that induces terminal differentiation of late-developing B-cells to immunoglobulin secreting cells.
Form	Liquid
Bio-activity	Measured in a cell proliferation assay using TF-1 human erythroleukemic cell. The ED50 range ≤ 15 ng/mL.
Molecular Mass	13.9 kDa
AA Sequence	VENPMNRLVAETLTLSTHRTWLIGDGNLMIPTPENKNHQLCIKEVFQGGIDTLKNQTA HGEAVDKLFQNLSLIKEHIERQKKRCAGERWRVTKFLDYLVFLGVINTEWTPES
Endotoxin	< 1 EU/ μ g of protein (determined by LAL method)
Purity	> 90% by SDS-PAGE
Applications	SDS-PAGE, Bioactivity

 Tel: 1-631-559-9269 1-516-512-3133

 Email: info@creative-biomart.com  Fax: 1-631-938-8127

 45-1 Ramsey Road, Shirley, NY 11967, USA

Storage	Can be stored at +2 to +8 centigrade for 1 week. For long term storage, aliquot and store at -20 to -82 centigrade. Avoid repeated freezing and thawing cycles.
----------------	---

Concentration	0.25 mg/mL (determined by Absorbance at 280nm)
----------------------	--

Storage Buffer	Phosphate-Buffered Saline (pH 7.4) containing 10% glycerol
-----------------------	--

GENE INFORMATION

Gene Name	IL5 interleukin 5 [<i>Canis lupus familiaris</i> (dog)]
------------------	---

Official Symbol	IL5
------------------------	-----

Synonyms	IL5; interleukin 5; interleukin-5; IL-5; T-cell replacing factor; TRF; eosinophil differentiation factor; interleukin 5 (colony-stimulating factor, eosinophil)
-----------------	---

Gene ID	403790
----------------	--------

mRNA Refseq	NM_001006950
--------------------	--------------

Protein Refseq	NP_001006951
-----------------------	--------------

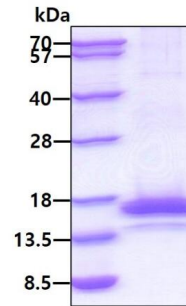
UniProt ID	Q95J76
-------------------	--------

 Tel: 1-631-559-9269 1-516-512-3133

 Email: info@creative-biomart.com  Fax: 1-631-938-8127

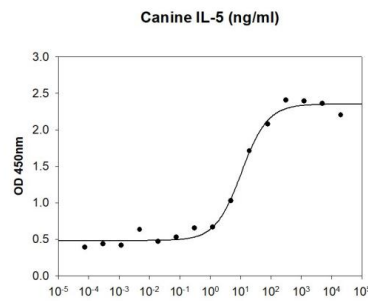
 45-1 Ramsey Road, Shirley, NY 11967, USA

SDS-PAGE



3 μ g by SDS-PAGE under reducing condition and visualized by coomassie blue stain

Biological Activity



Canine IL-5 in a cell proliferation assay using TF-1 human erythroleukemic cell. The ED50 range \leq 15 ng/mL.

 Tel: 1-631-559-9269 1-516-512-3133

 Email: info@creative-biomart.com  Fax: 1-631-938-8127

 45-1 Ramsey Road, Shirley, NY 11967, USA